



Sr. No.	Finish	Design No.	Page No.
1	GL	201	37
2	GL	202	37
3	GL	204	37
	GL	204	39
4	GL	206	38
	GL	206	40
5	GL	214	38
6	GL	252	37
7	GL	260	37
8	GL	272	37
9	GL	273	38
10	GL	275	38
11	GL	276	38
12	GL	277	38
13	GL	399	65
14	GL	401	65
15	GL	404	65
16	GL	406	65
17	GL	736	45
18	GL	737	45
19	GL	803	45
20	GL	804	45
21	GL	805	43
22	GL	806	43
23	GL	807	43
24	GL	808	43
25	GL	811	42
26	GL	812	42
27	GL	813	44
28	GL	814	44
29	GL	815	40
30	GL	821	41
31	GL	822	41
32	GL	828	39
33	HPF 112	564	35
34	HPF 112	566	35
35	HPF 122	202	36
36	HPF 122	214	36
37	HPF 122	272	36
38	HPF 123	791	30
39	HPF 123	792	30
40	HPF 123	803	30
41	HPF 123	804	30
42	HPF 124	801	23
43	HPF 124	802	23
44	HPF 124	811	24
45	HPF 124	812	24
46	HPF 125	202	33
47	HPF 125	566	33
48	HPF 125	807	34
49	HPF 125	808	34
50	HPF 125	809	33
51	HFP 126	747	25
52	HFP 126	791	25
53	HFP 126	792	26
54	HFP 126	793	26
55	HPF 127	202	22
56	HPF 127	273	22
57	HPF 127	805	22
58	HPF 127	806	22
59	HPF 128	747	27
60	HPF 128	810	29

Sr. No.	Finish	Design No.	Page No.
61	HPF 128	813	28
62	HPF 128	814	28
63	HPF 129	202	31
64	HPF 129	272	31
65	HPF 129	771	32
66	HPF 129	772	31
67	HPF 129	773	32
68	HPF 201	747	2
69	HPF 201	813	1
70	HPF 201	814	1
71	HPF 201	815	3
72	HPF 202	822	4
73	HPF 202	819	5
74	HPF 202	820	6
75	HPF 202	737	7
76	HPF 202	736	7
77	HPF 202	821	8
78	HPF 203	826	9
79	HPF 203	827	9
80	HPF 204	747	12
81	HPF 204	811	12
82	HPF 204	815	10
83	HPF 204	816	11
84	HPF 205	817	13
85	HPF 205	818	13
86	HPF 206	823	15
87	HPF 206	824	16
88	HPF 206	825	14
89	HPF 207	913	17
90	HPF 207	917	17
91	HPF 207	921	17
92	HPF 207	922	17
93	HPF 208	811	19
94	HPF 208	828	20
95	HPF 208	915	19
96	HPF 232	797	21
97	HPF 232	798	21
98	MT	201	66
99	MT	202	66
100	SF	201	66
101	SF	202	66
102	SF	204	5
	SF	204	16
	SF	204	48
	SF	204	66
103	SF	206	5
	SF	206	14
104	SF	206	66
	SF	207	66
105	SF	208	66
106	SF	212	66
107	SF	214	66
108	SF	215	66
109	SF	216	66
110	SF	219	66
111	SF	220	66
112	SF	252	66
113	SF	260	66
114	SF	272	66
115	SF	273	66
116	SF	275	66
117	SF	346	65

Sr. No.	Finish	Design No.	Page No.
118	SF	366	65
119	SF	369	65
120	SF	399	65
121	SF	401	65
122	SF	404	65
123	SF	406	65
124	SF	416	64
125	SF	419	64
126	SF	420	64
127	SF	506	64
128	SF	507	64
129	SF	526	62
130	SF	528	61
131	SF	529	61
132	SF	531	61
133	SF	563	62
134	SF	564	63
134	SF	564	63
135	SF	566	63
136	SF	705	63
137	SF	730	59
138	SF	731	59
139	SF	736	58
140	SF	737	58
141	SF	801	46
142	SF	802	46
143	SF	803	56
144	SF	804	56
145	SF	805	55
146	SF	806	55
147	SF	807	60
148	SF	808	60
149	SF	809	63
150	SF	810	62
151	SF	811	57
152	SF	812	57
153	SF	813	54
154	SF	814	54
155	SF	815	47
156	SF	816	49
157	SF	817	51
158	SF	818	51
159	SF	819	56
160	SF	820	50
161	SF	821	52
162	SF	822	50
163	SF	823	51
164	SF	824	48
165	SF	825	53
166	SF	826	52
167	SF	827	52
168	SF	828	55
169	SF	913	64
170	SF	915	57
171	SF	917	64
172	SF	921	64
173	SF	922	64
174	SMT	279	4
175	SMT	279	6

SIZE

2440 x 1220 mm

THICKNESS

Any Thickness can be available as per the requirement.

CARE AND MAINTENANCE

Laminate shall be cleaned with ordinary Soap or household ammoniated liquid detergent. For stubborn stains use diluted organic or stain remover. Abrasive cleaners and wire brushes are not recommended.

WARRANTY

Our Company warrants that its products are Free from manufacturing defects and that they are fit And suitable for usual purpose under normal and proper use. The product must be inspected thoroughly prior to installation And our liability will be limited to the extent of the cost of our product only. However raw material inspected by the experts before production, There might be chances of some manual error in colour matching With the previous lot. User must have to inspect the sheets before installation. No claim for the manufacturing defect or colour variation Will be entertained if the product is cut or altered in any manner.

NOTE

Samples pasted represents only colour/pattern, Finish and not actual thickness. It is advisable To view full laminate sheets for actual patterns before purchase.



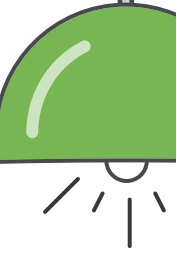
▲ HPF - 201 814



▲ HPF - 201 813



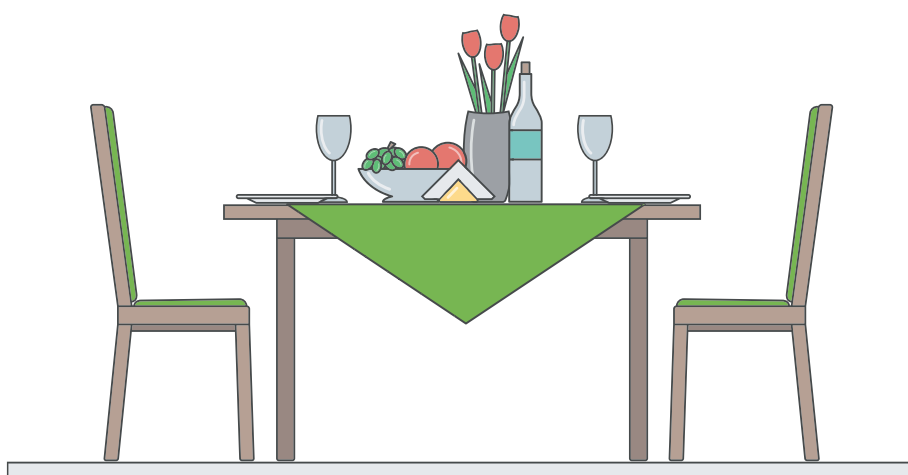
▲ HPF - 201 747



▲ HPF - 201 815



▲ HPF - 202 822



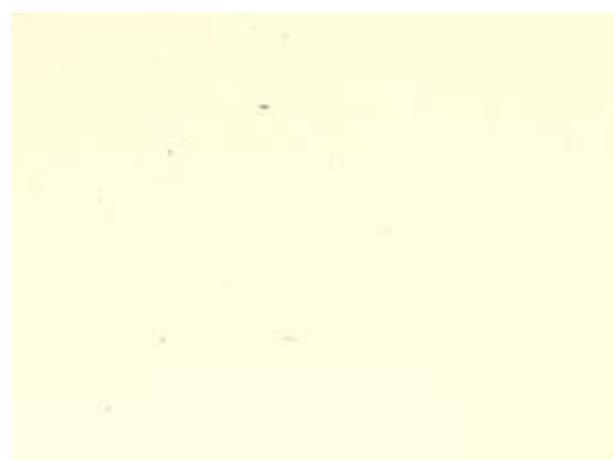
▲ SMT 279



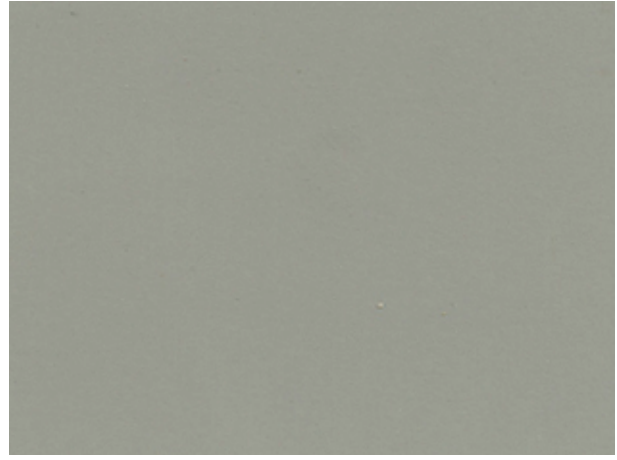
▲ HPF - 202 819



▲ SF 206



▲ SF 204



▲ SMT 279



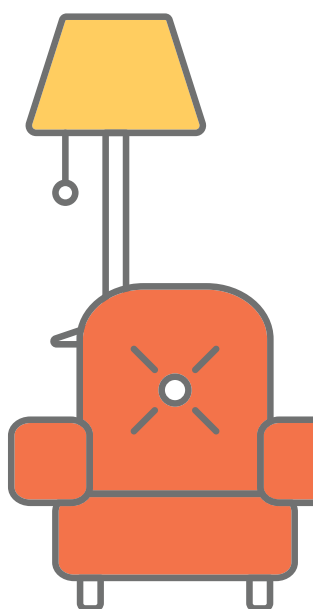
▲ HPF - 202 820

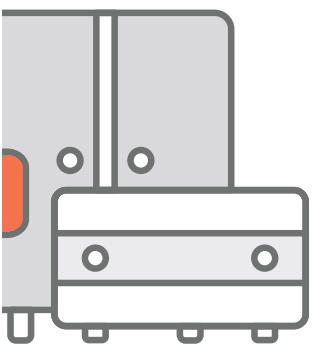
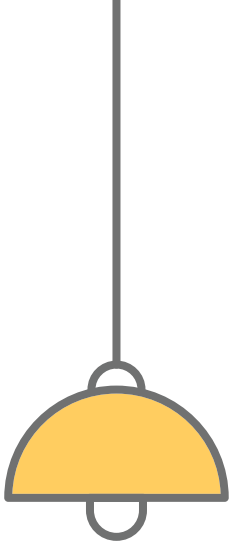


▲ HPF - 202 737

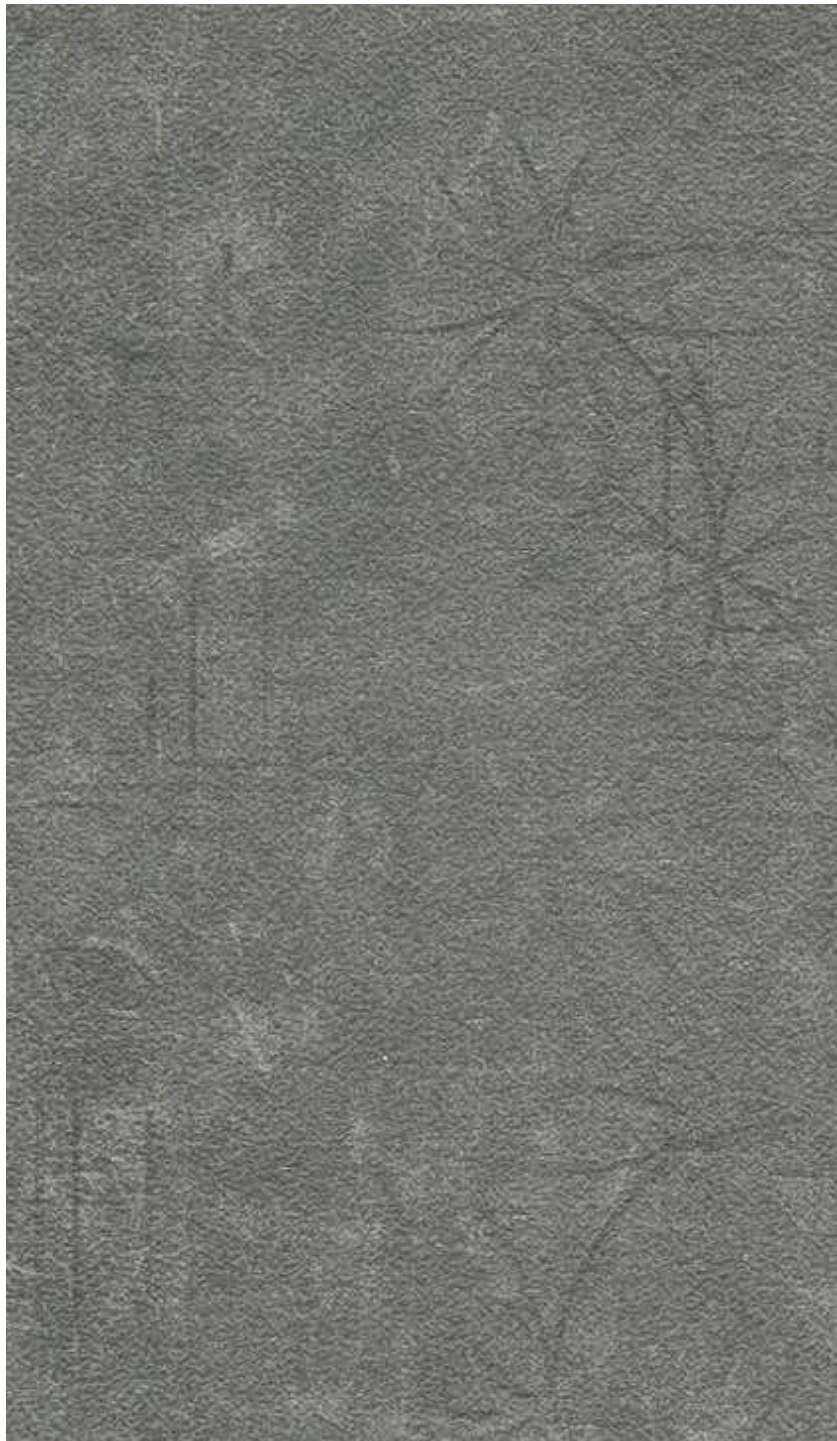


▲ HPF - 202 736

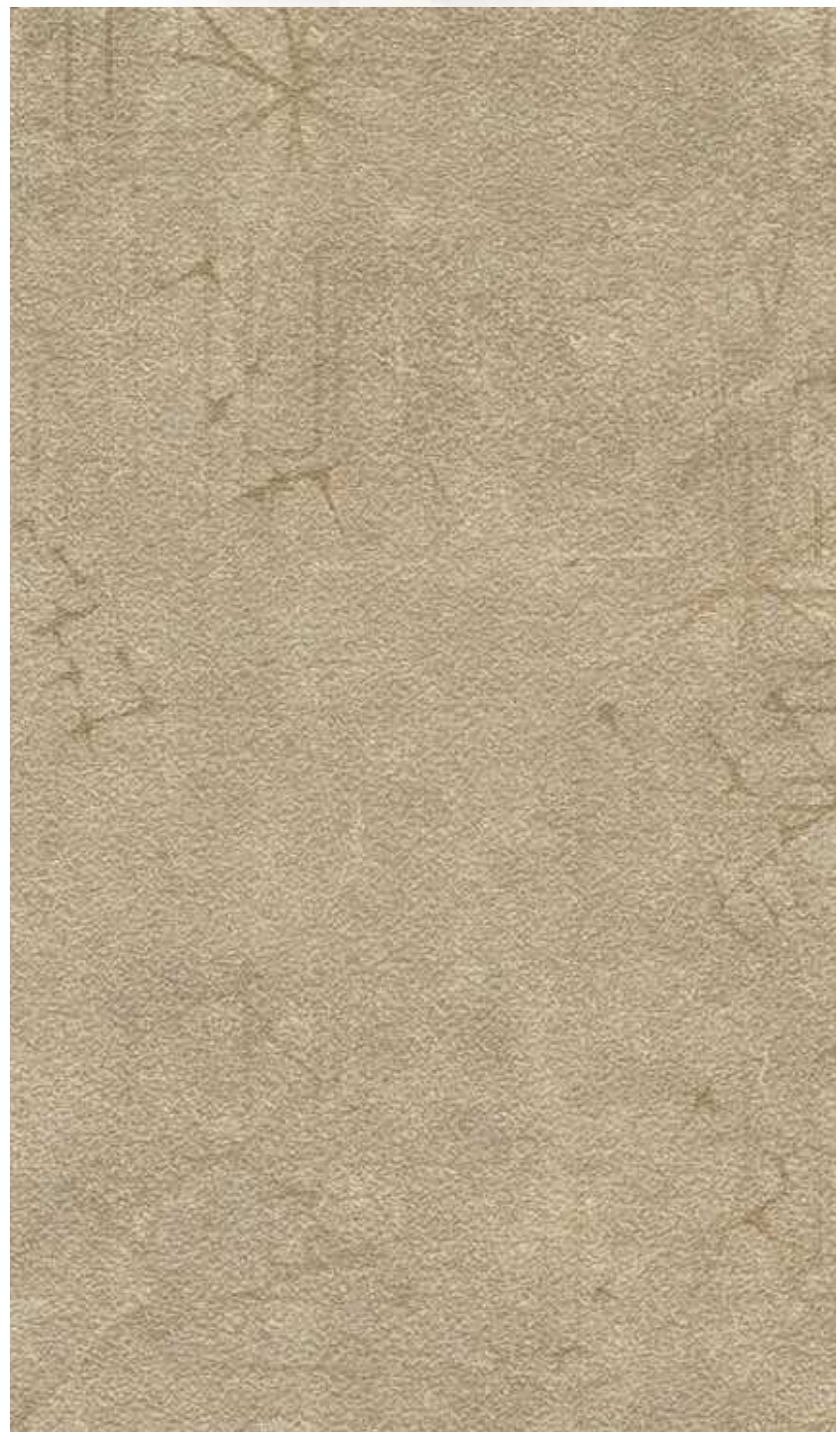
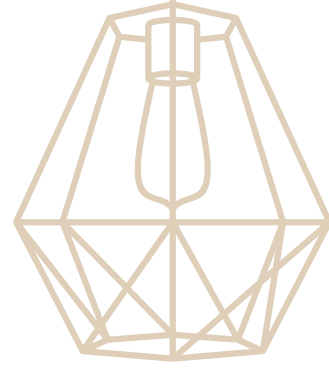




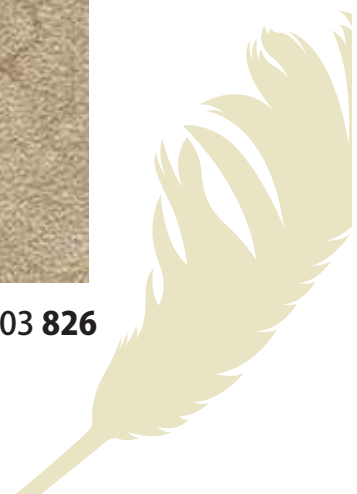
▲ HPF - 202 821



▲ HPF - 203 827

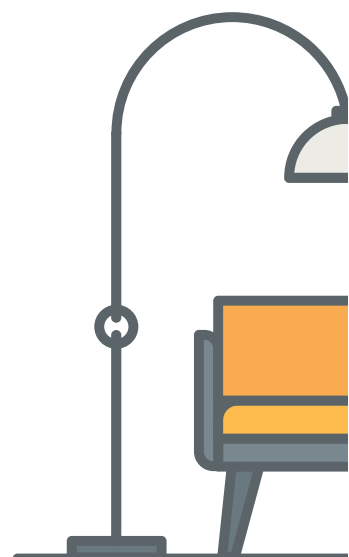


▲ HPF - 203 826

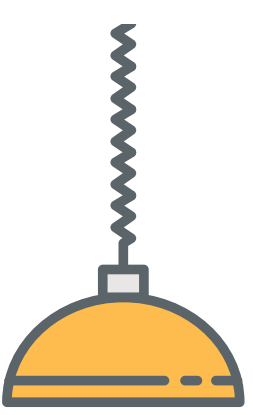




▲ HPF - 204 815



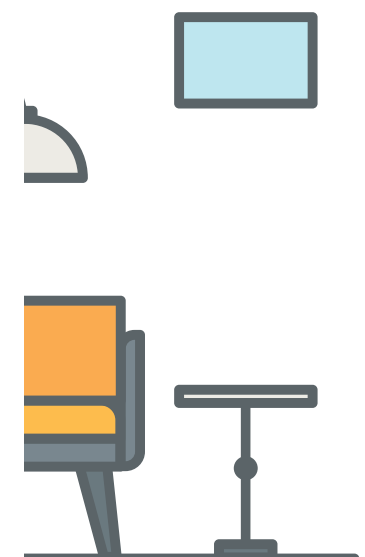
▲ HPF - 204 816

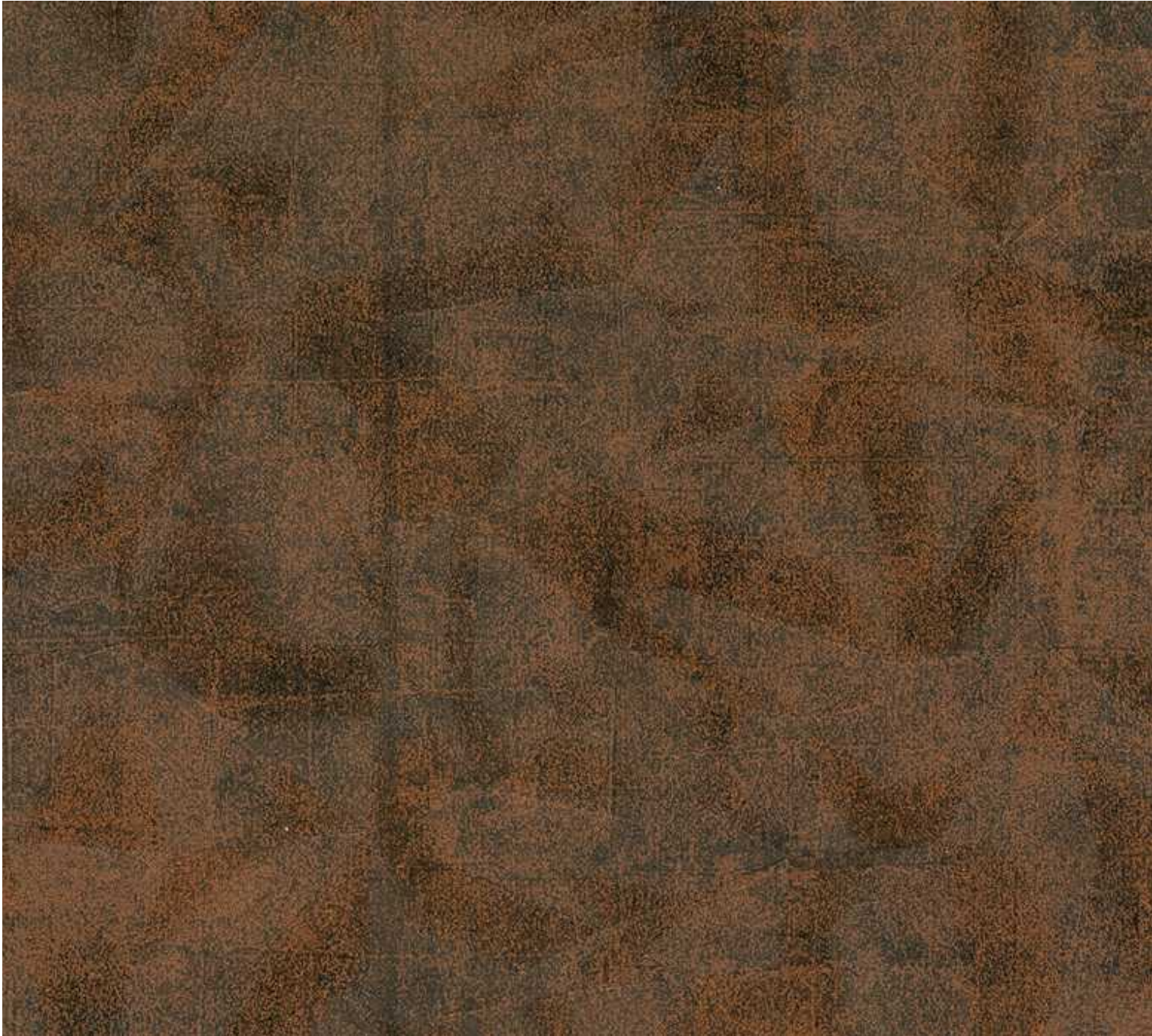


▲ HPF - 204 747



▲ HPF - 204 811

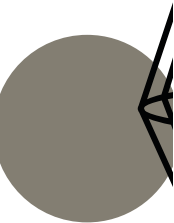


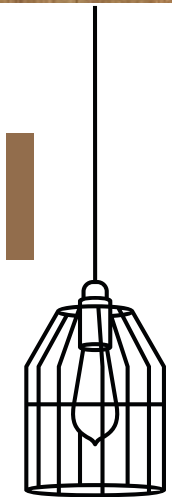
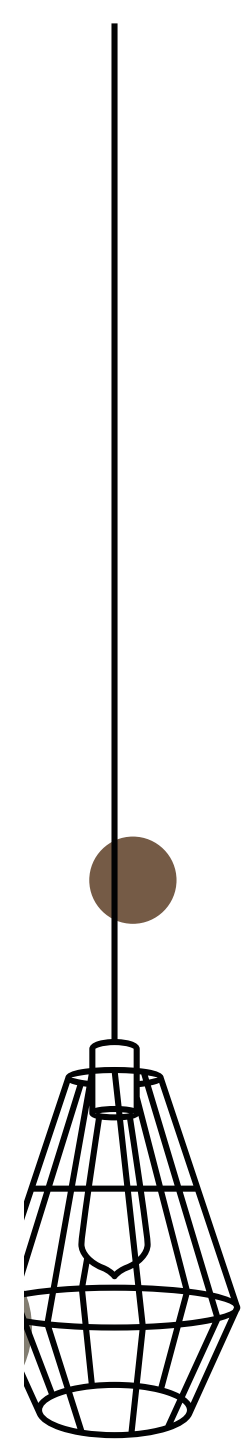


▲ HPF - 205 818



▲ HPF - 205 817





▲ HPF - 206 825



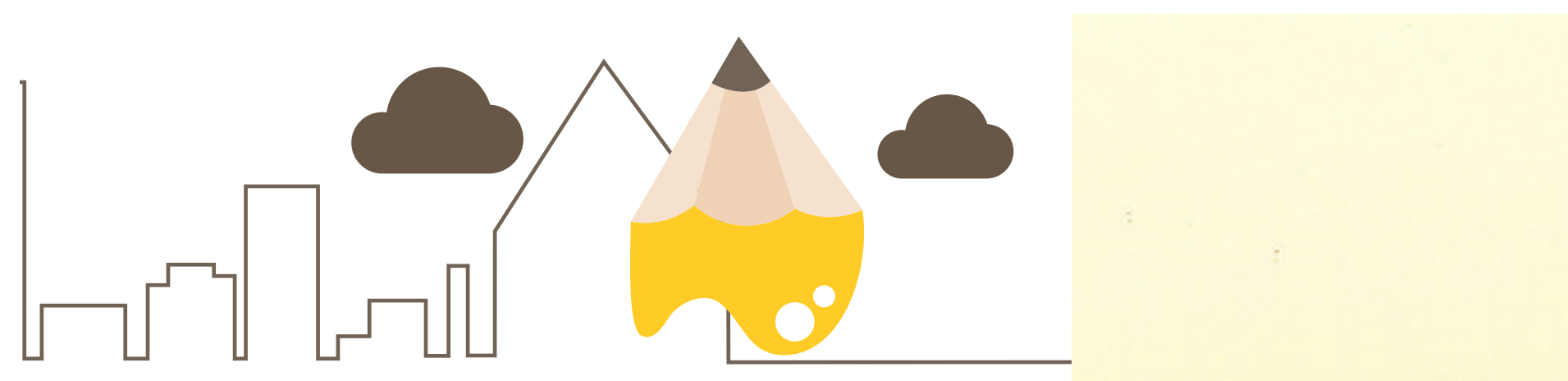
▲ SF 206



▲ HPF - 206 823



▲ HPF - 206 824



▲ SF 204



▲ HPF - 207 917



▲ HPF - 207 921



▲ HPF - 207 922



▲ HPF - 207 913





▲ HPF - 208 915



▲ HPF - 208 811



▲ HPF - 208 828

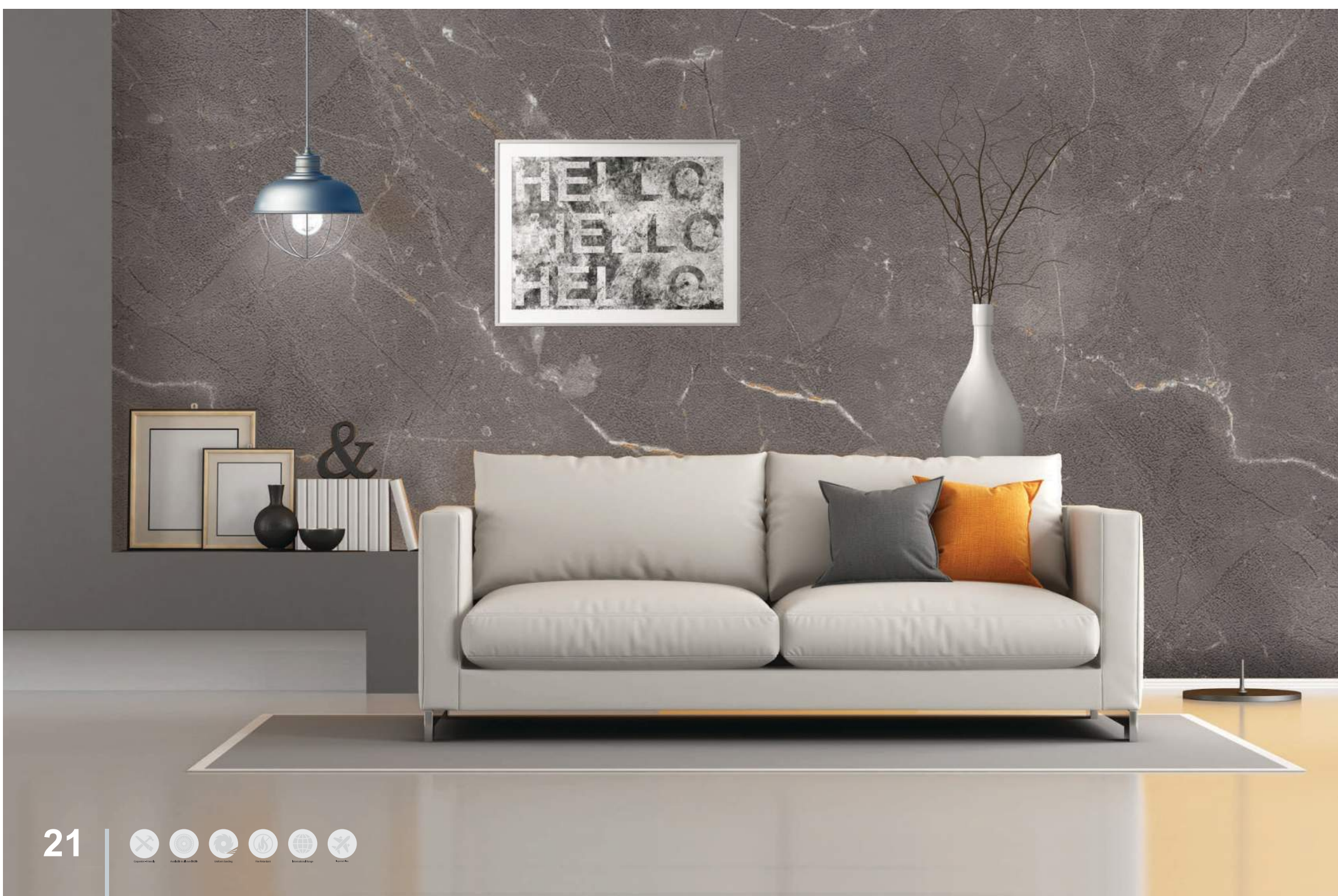


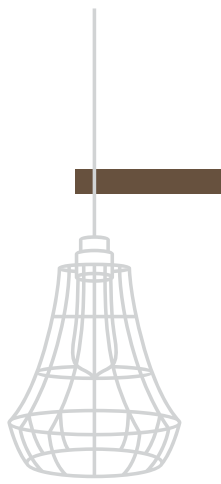


▲ HPF - 232 797

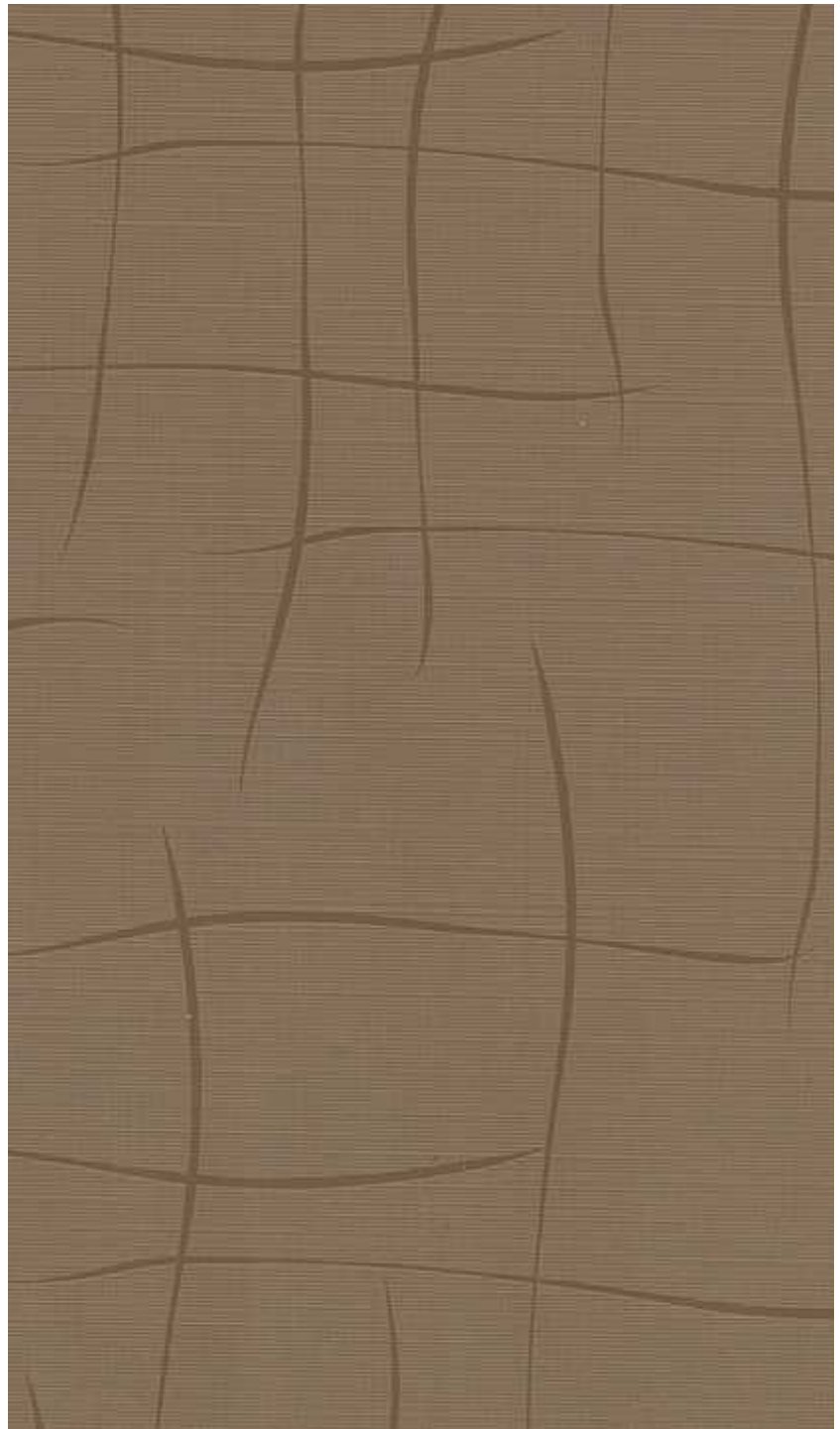


▲ HPF - 232 798





▲ HCF 127 - 202



▲ HCF 127 - 273



▲ HCF 127 - 806



▲ HCF 127 - 805





▲ HPF 124 - 801



▲ HPF 124 - 802



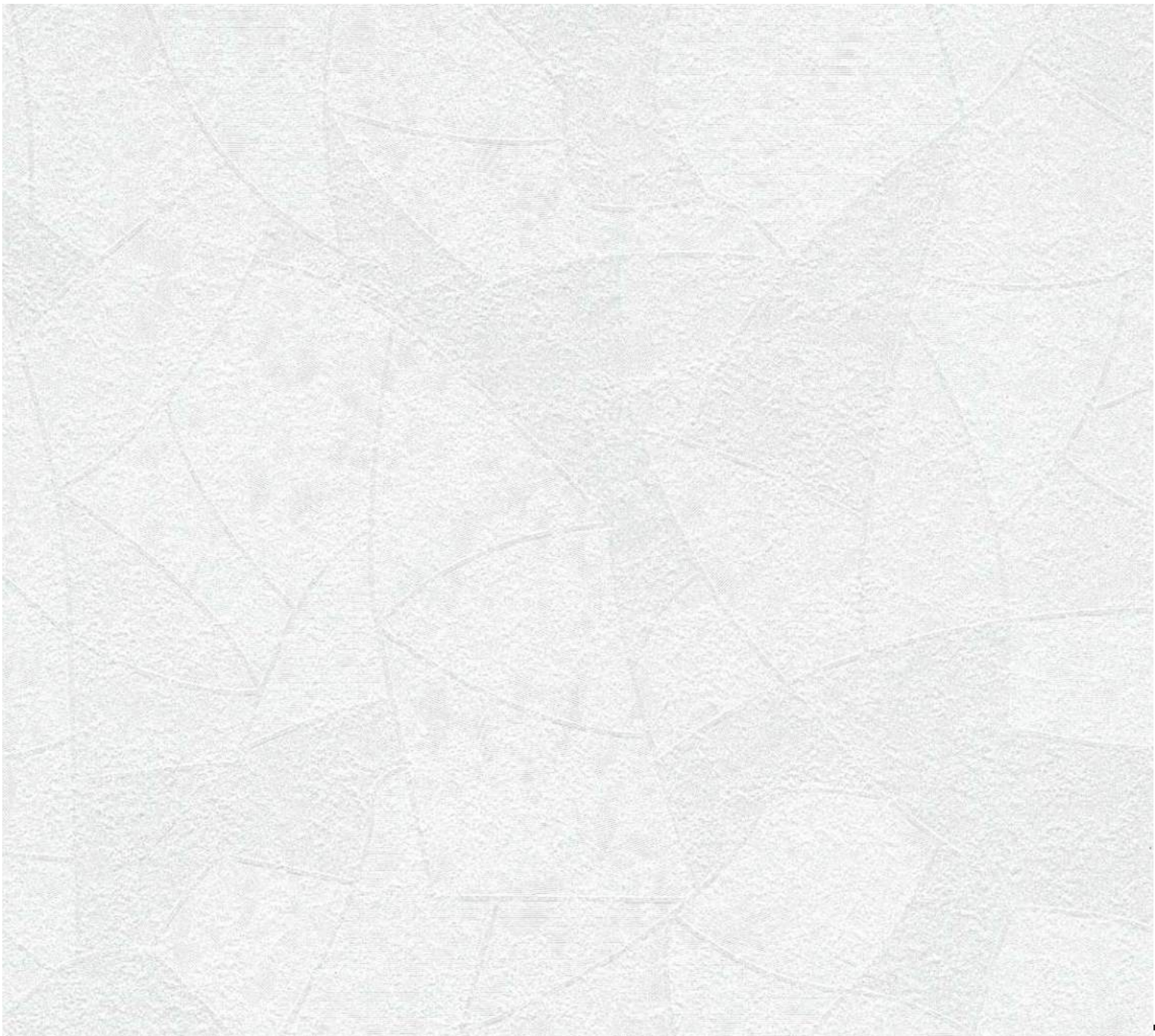
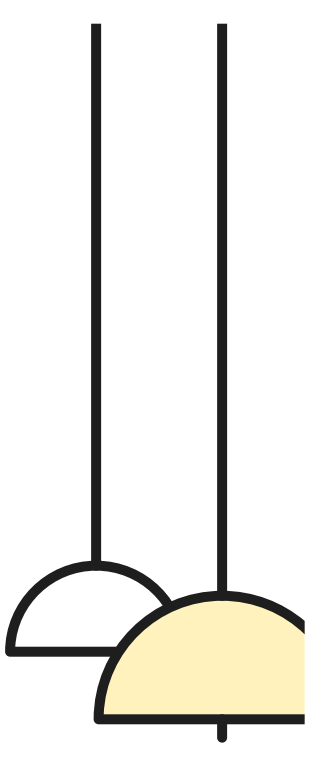
▲ HPF 124 - 812



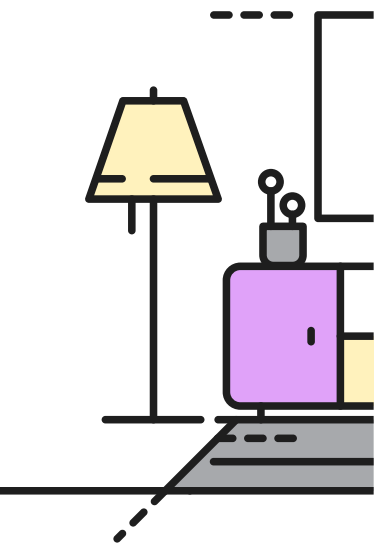
▲ HPF 124 - 811

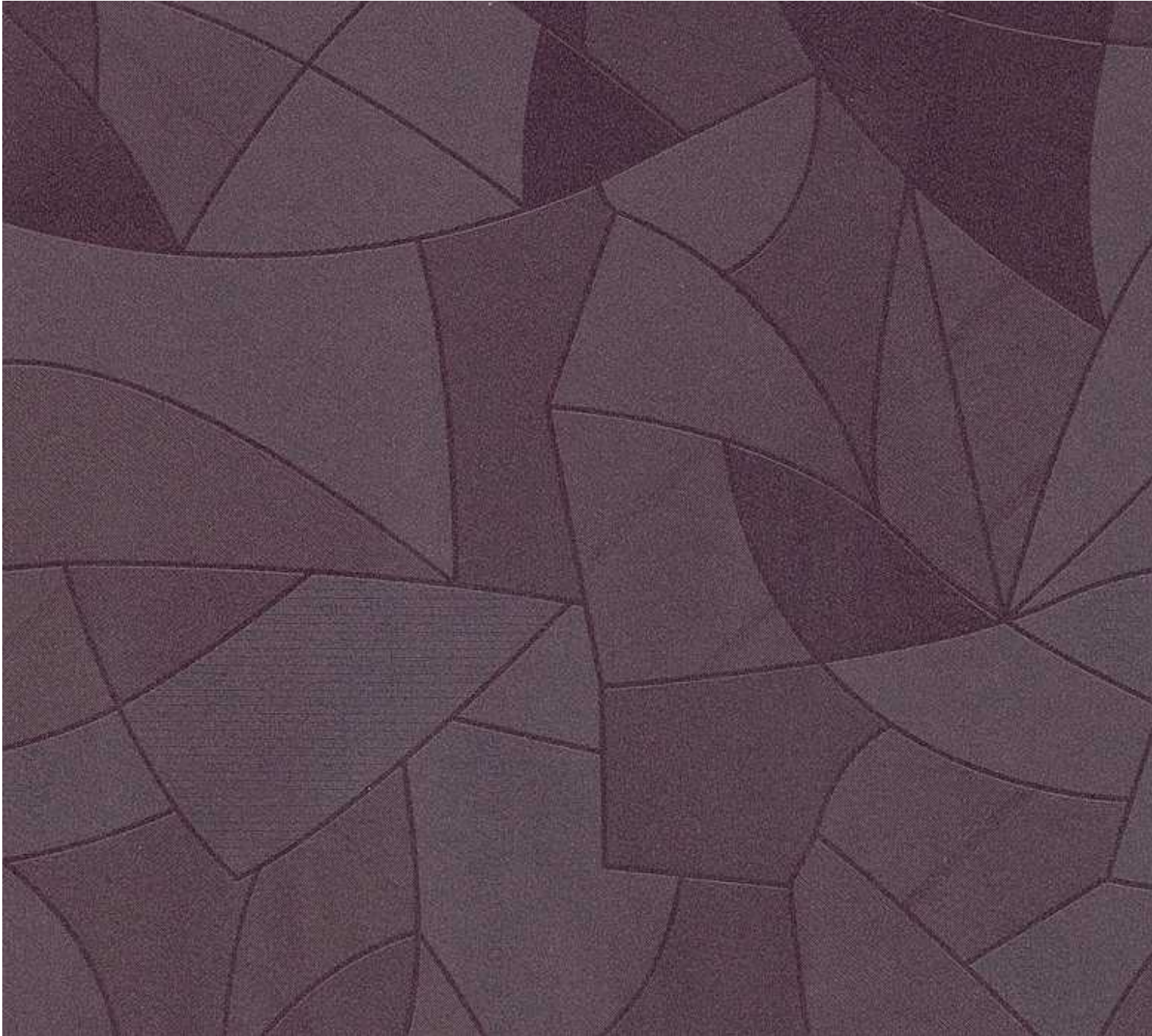


▲ HPF 126 - 747

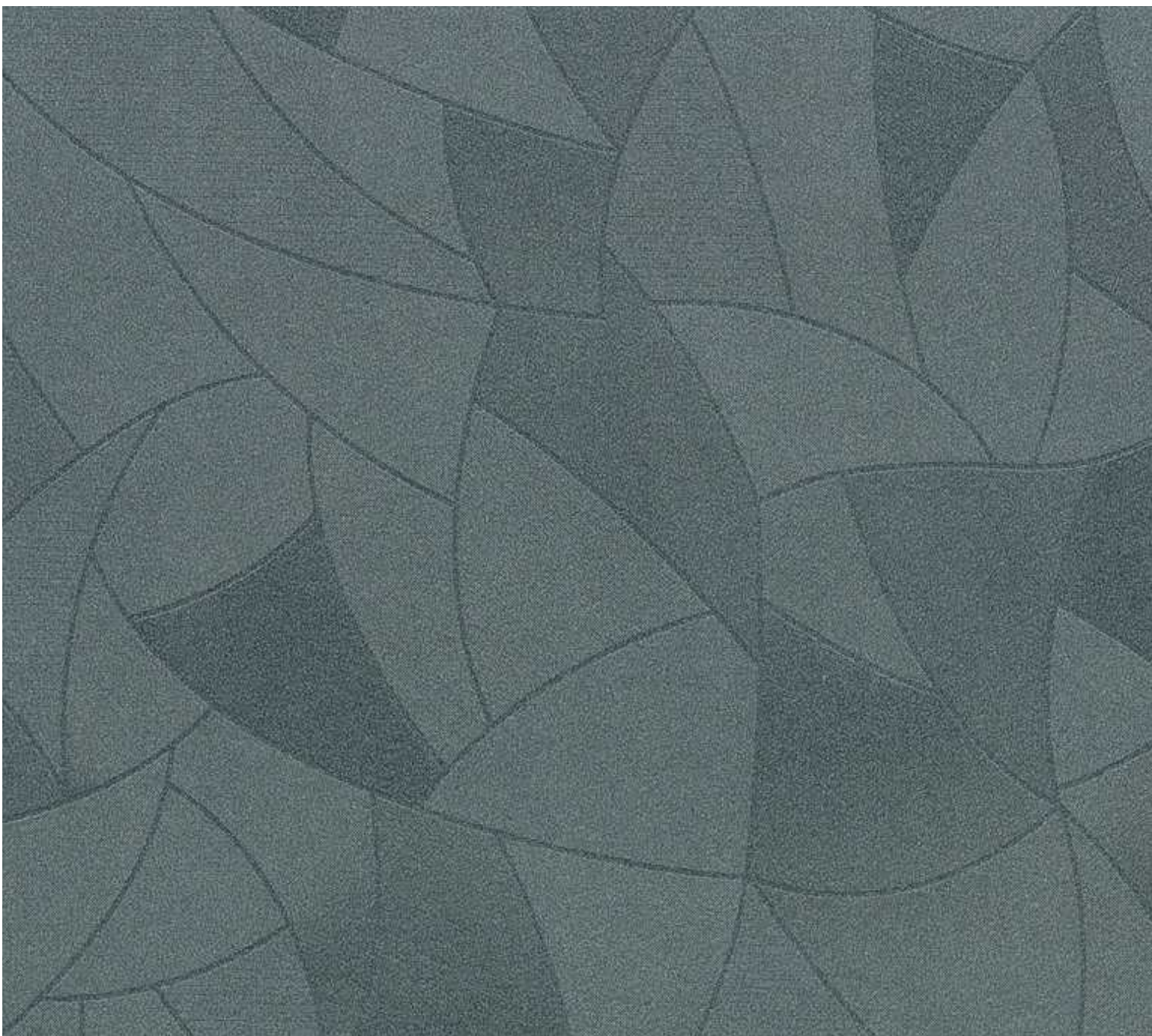


▲ HPF 126 - 791





▲ HPF 126 - 792



▲ HPF 126 - 793



▲ HPF 128 - 747



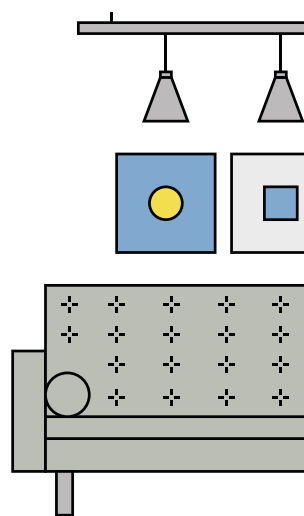
▲ HPF 128 - 814

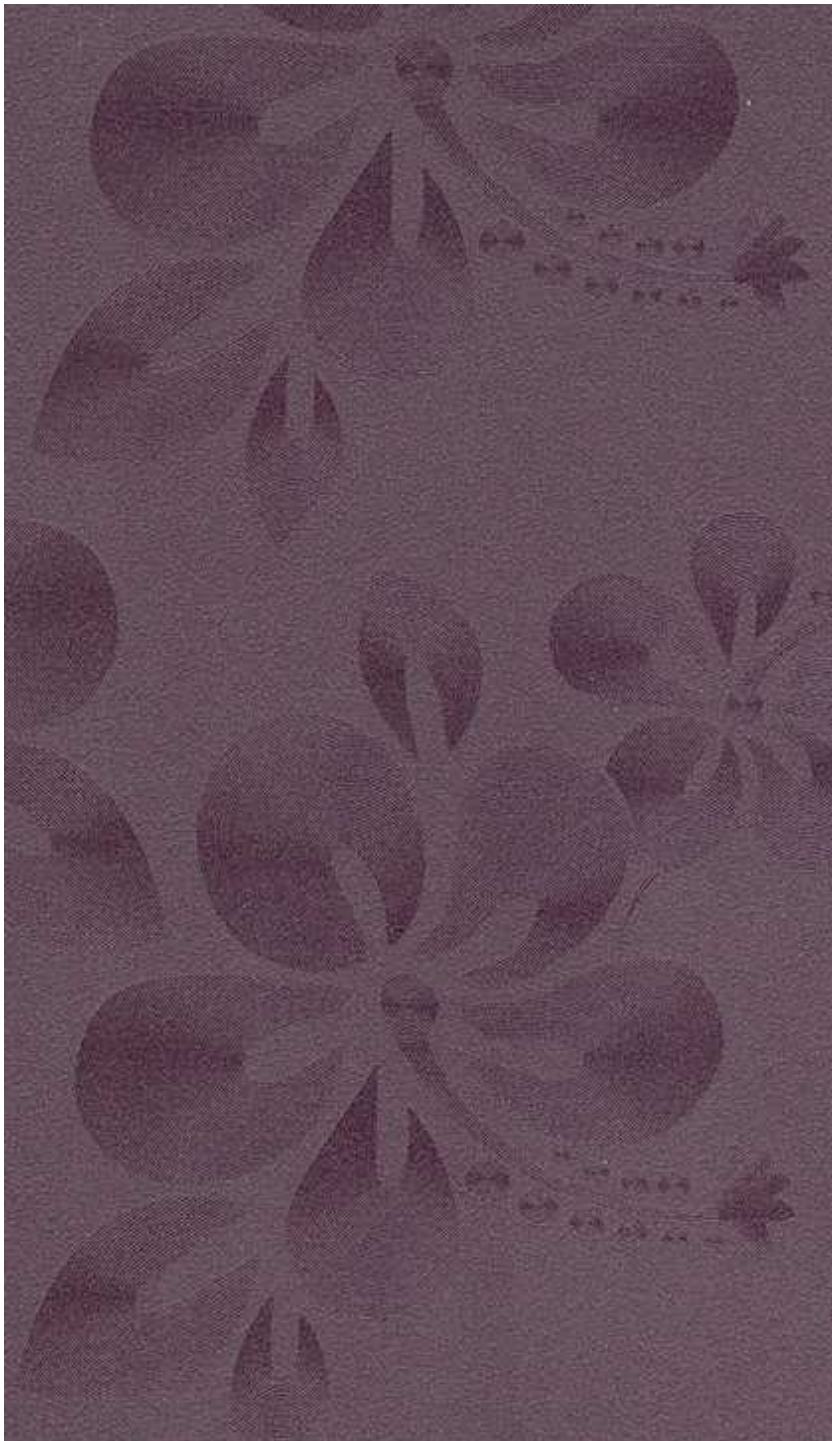


▲ HPF 128 - 813

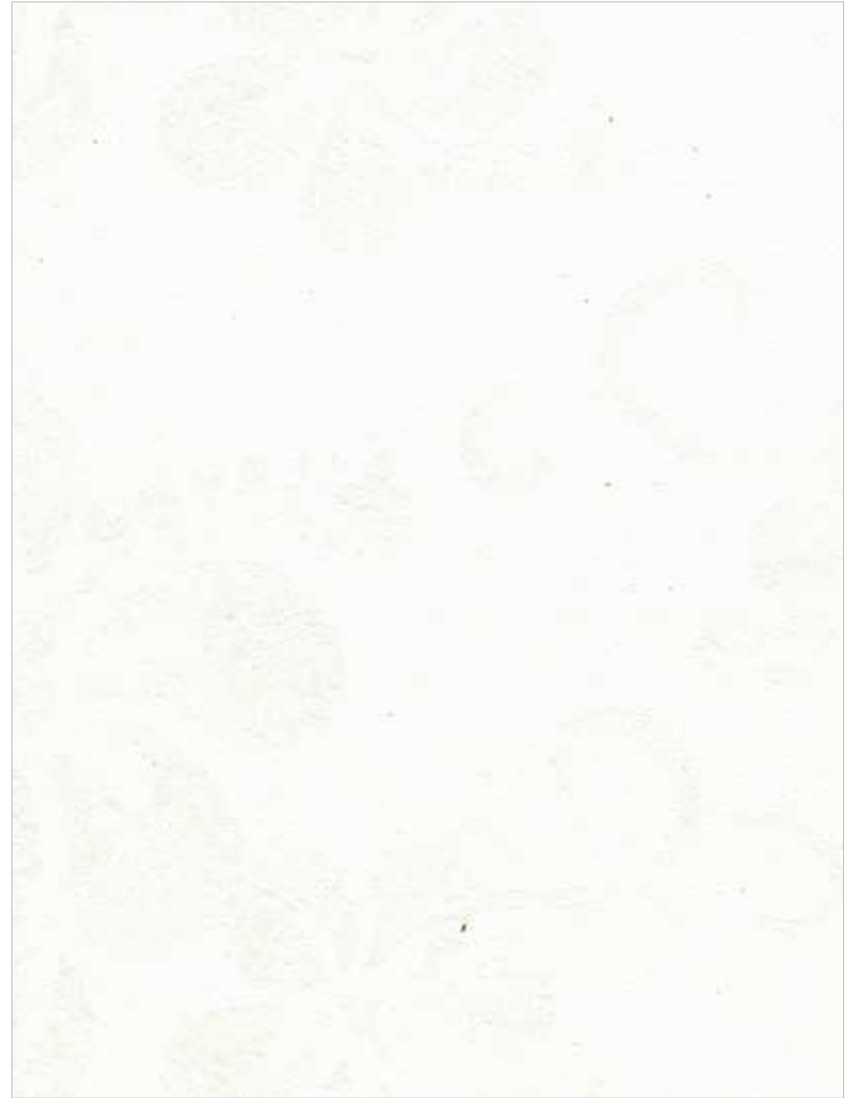


▲ HPF 128 - 810





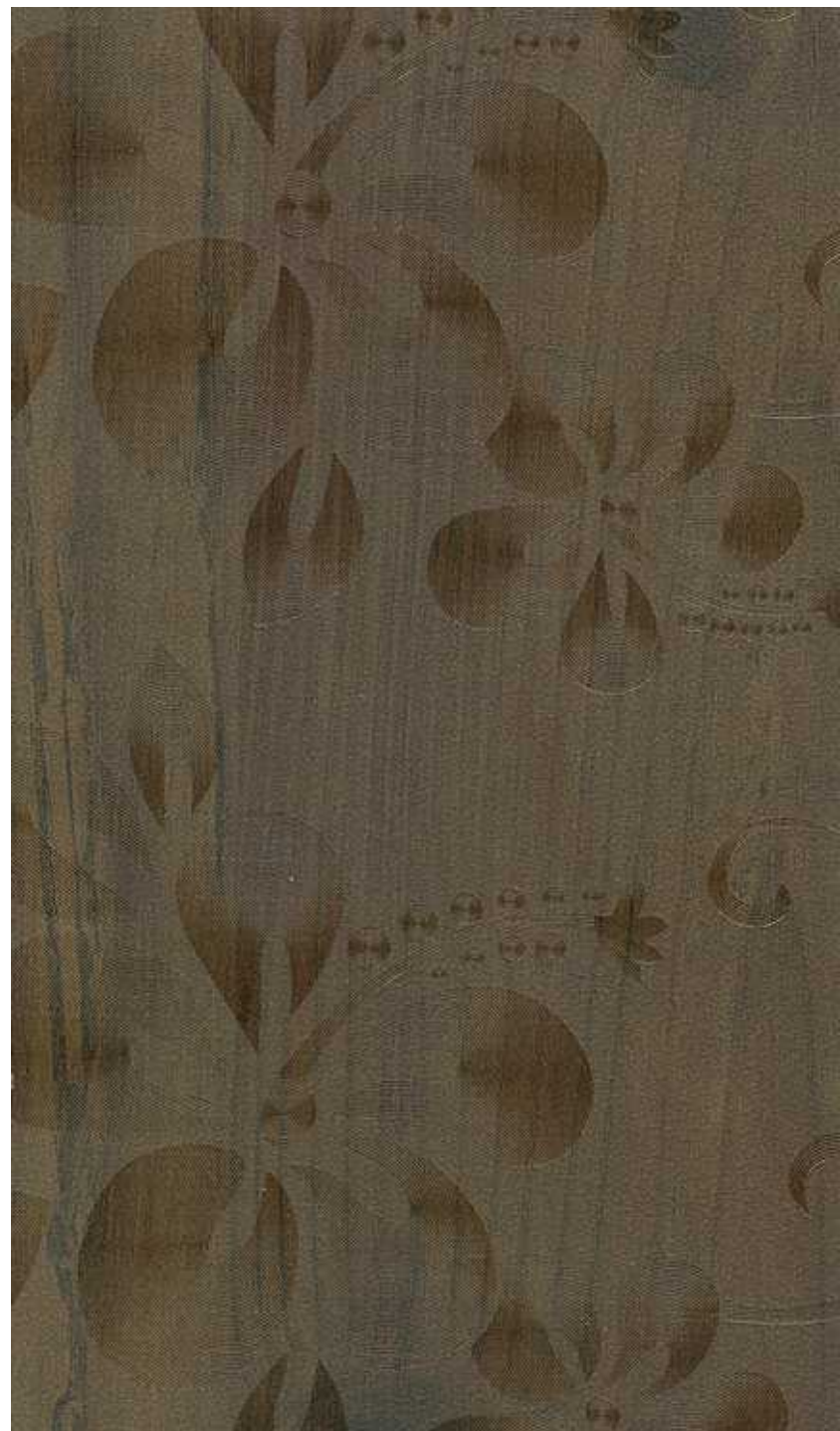
▲ HPF 123 - 792



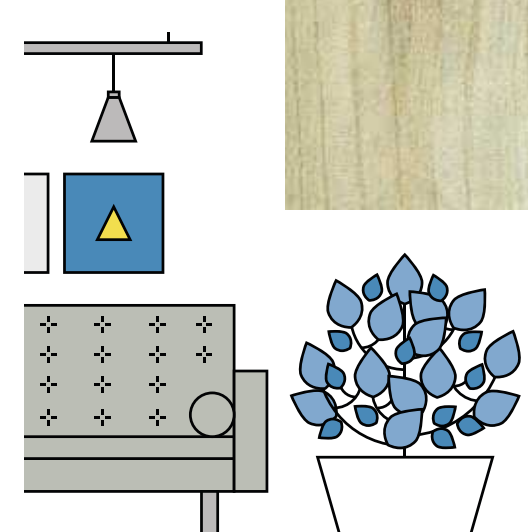
▲ HPF 123 - 791



▲ HPF 123 - 803

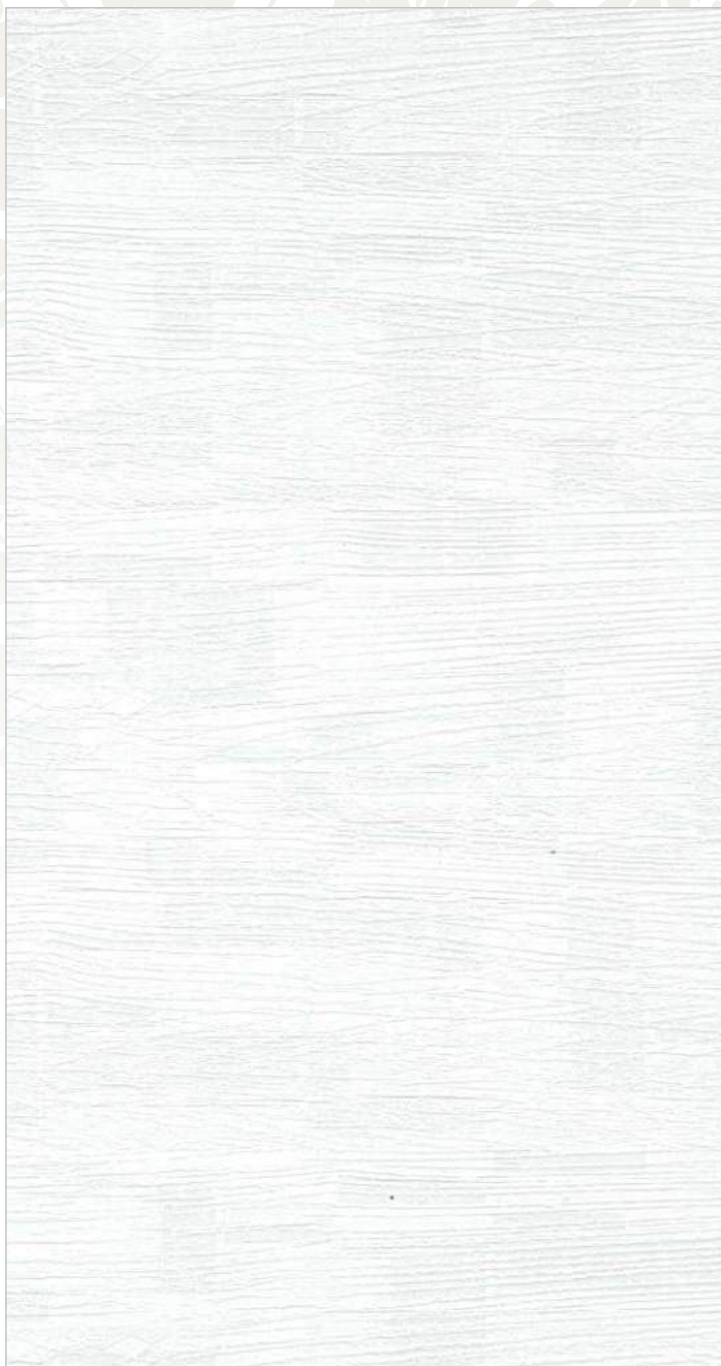


▲ HPF 123 - 804

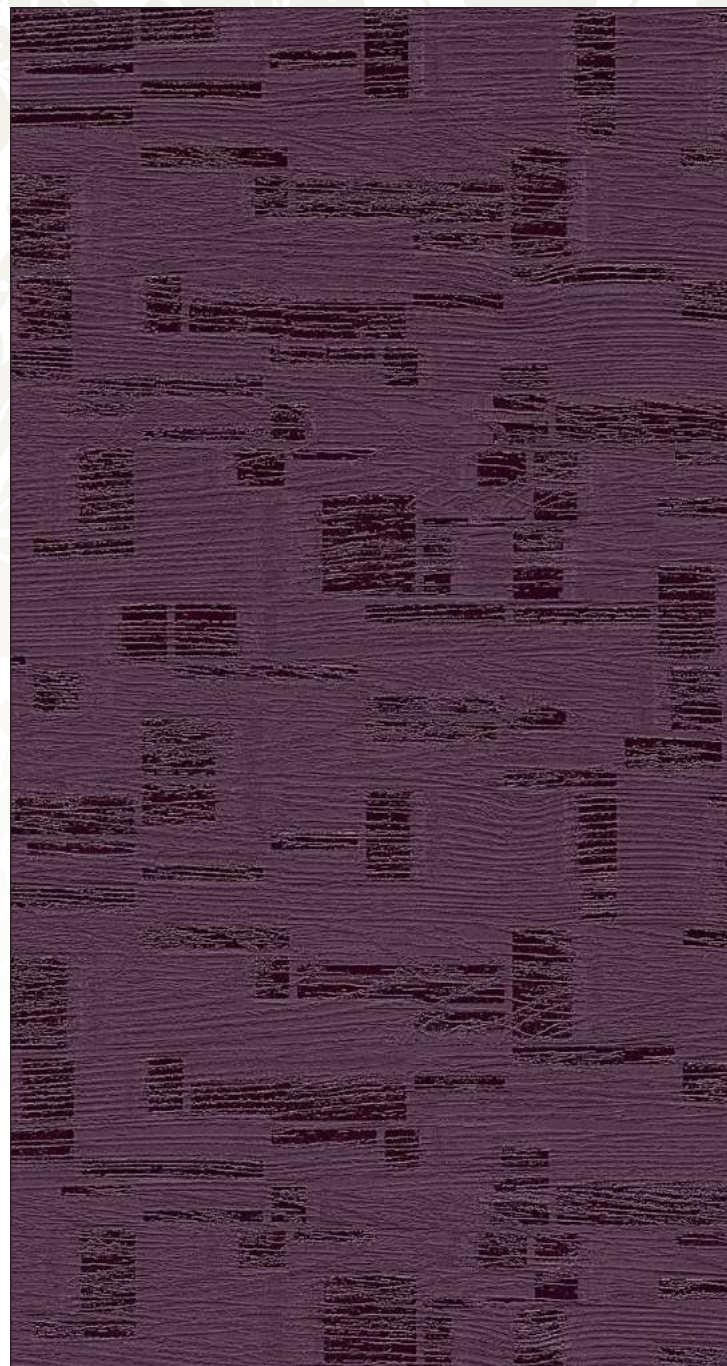




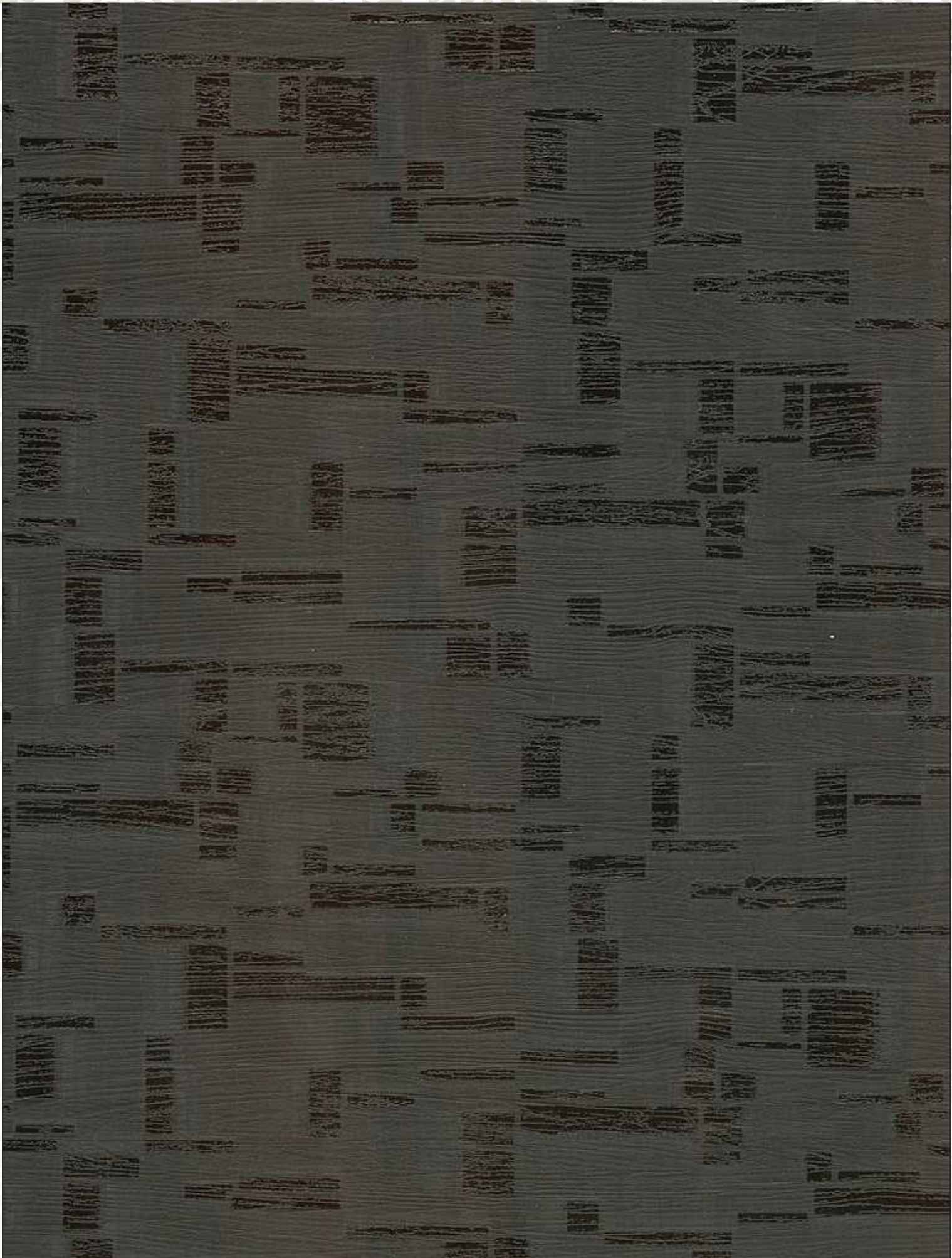
▲ HPF 129 - 772



▲ HPF 129 - 202



▲ HPF 129 - 272



▲ HPF129 - 773



▲ HPF 129 - 771



▲ HPF 125 - 202



▲ HPF 125 - 809



▲ HPF 125 - 566



▲ HPF 125 - 808



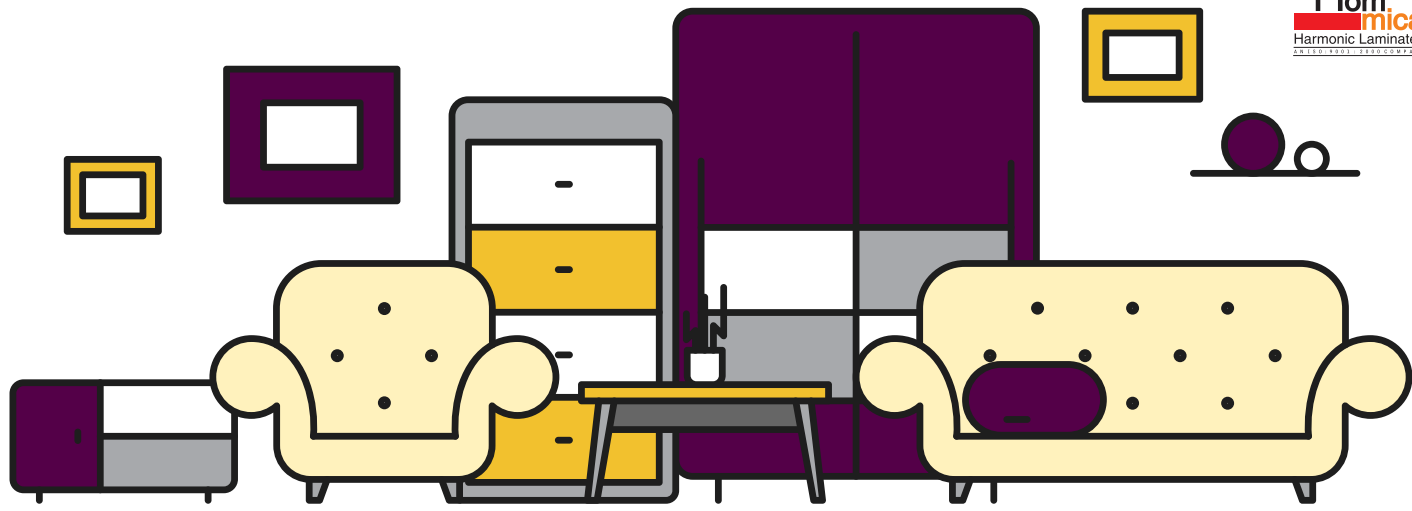
▲ HPF 125 - 807



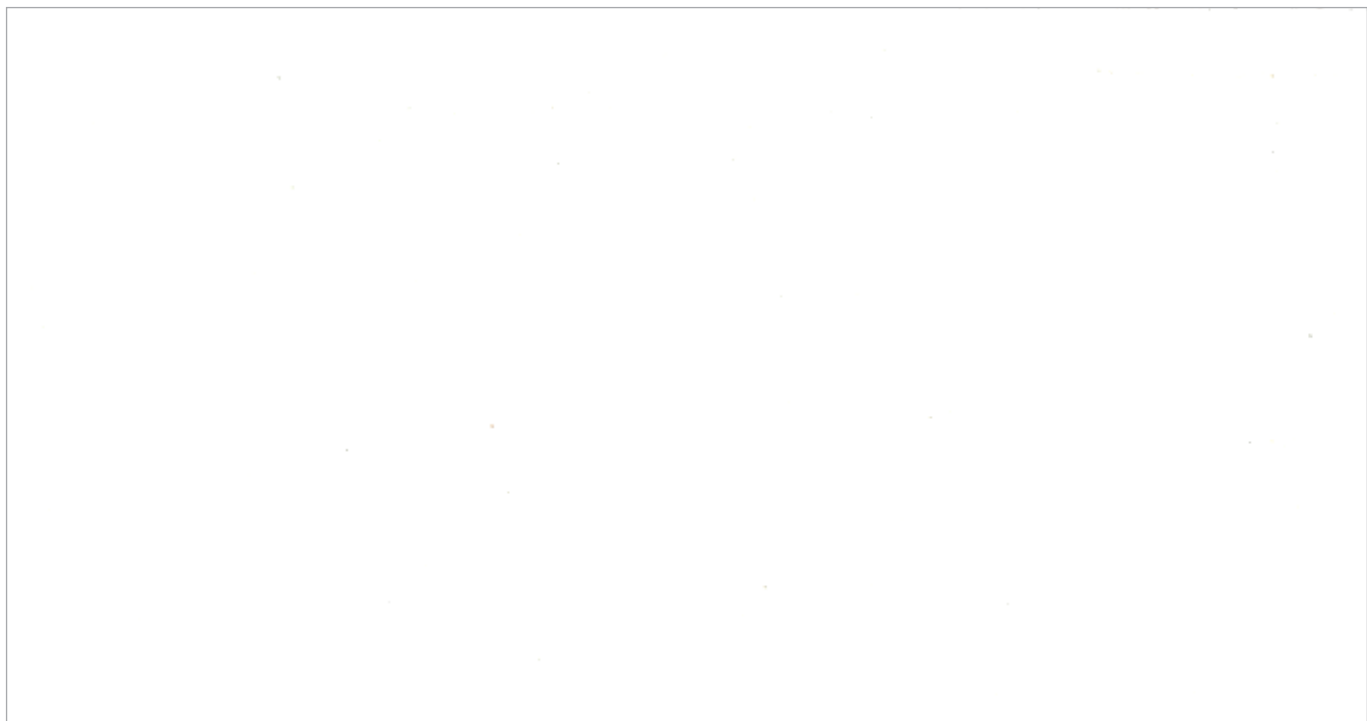
▲ HPF 112 - 566



▲ HPF 112 - 564



▲ HPF 122 - 272



▲ HPF 122 - 202



▲ HPF 122 - 214



▲ GL 260



▲ GL 204



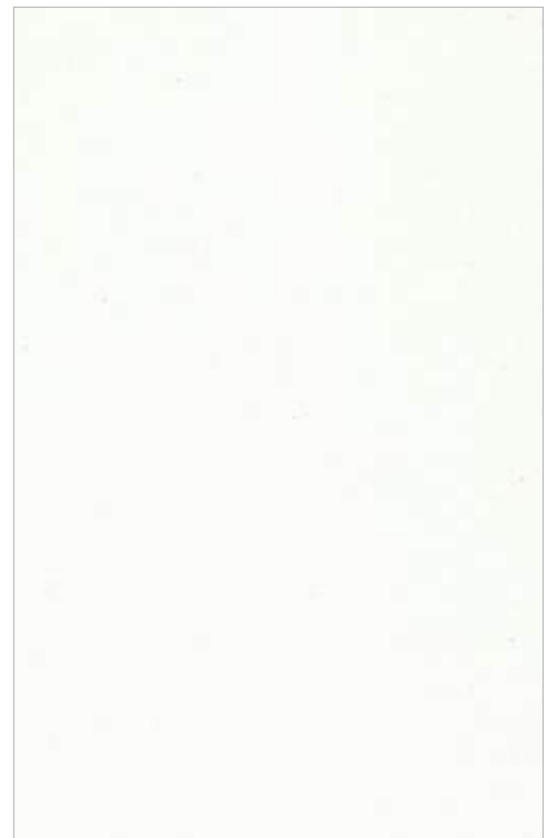
▲ GL 272



▲ GL 201



▲ GL 252



▲ GL 202



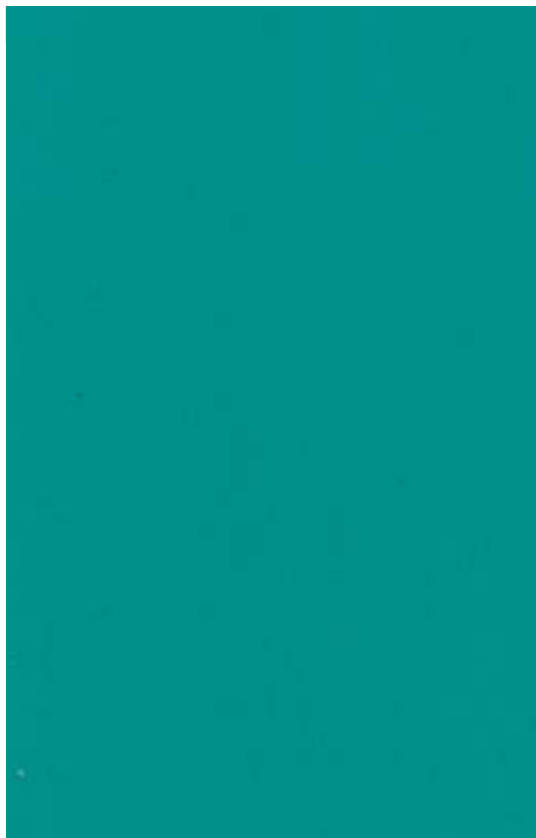
▲ GL 214



▲ GL 206



▲ GL 276



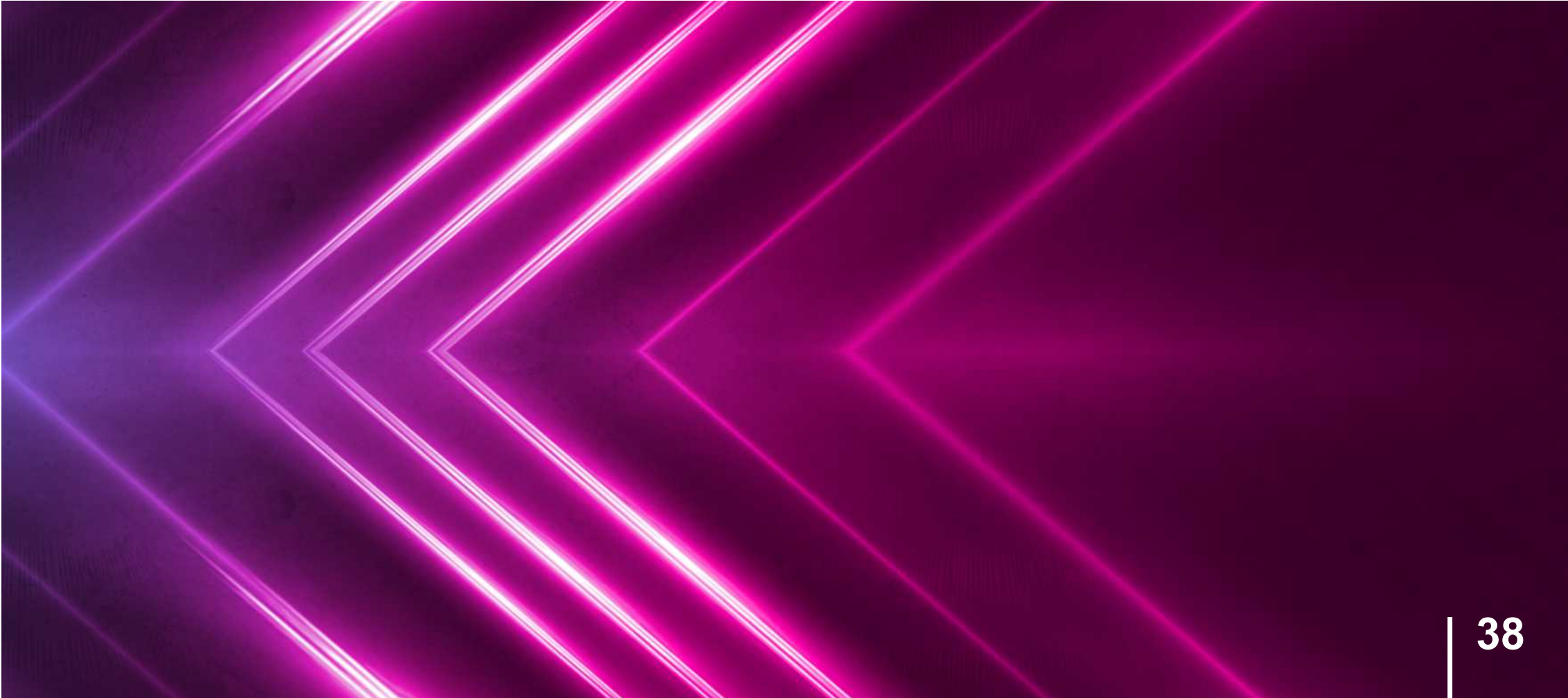
▲ GL 275



▲ GL 273



▲ GL 277



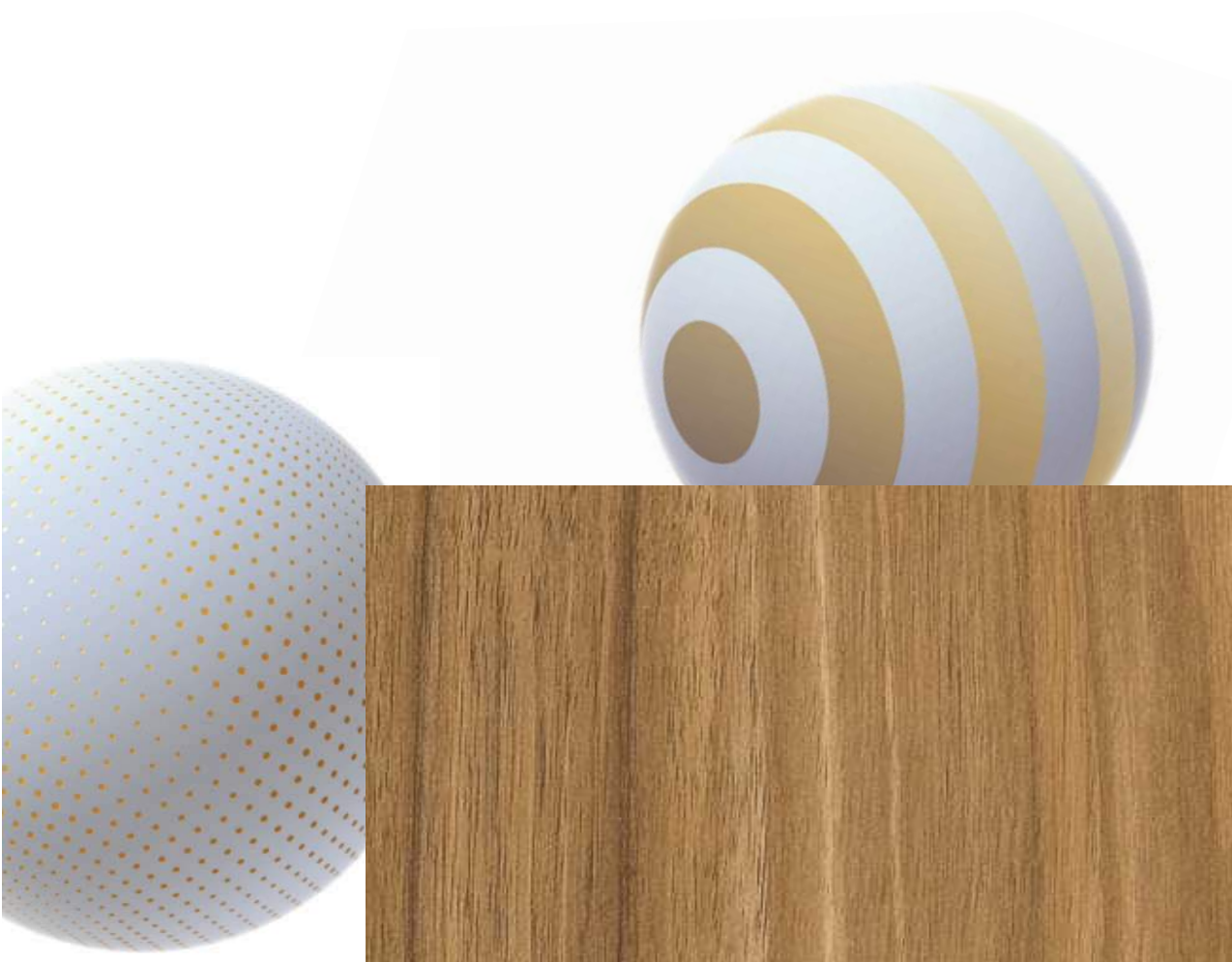


▲ GL 828



▲ GL 204

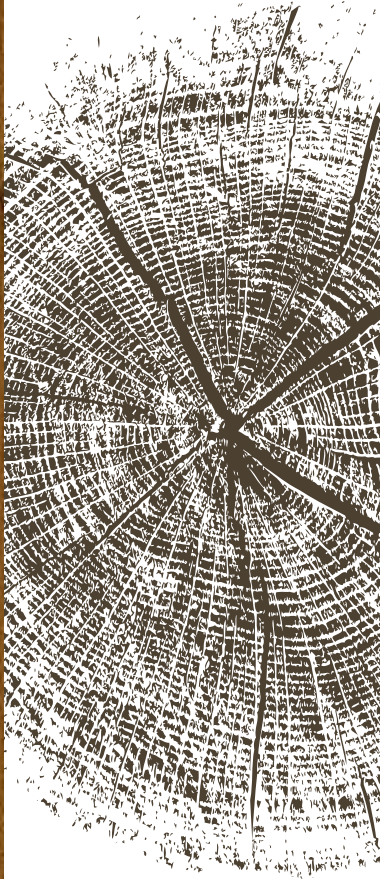




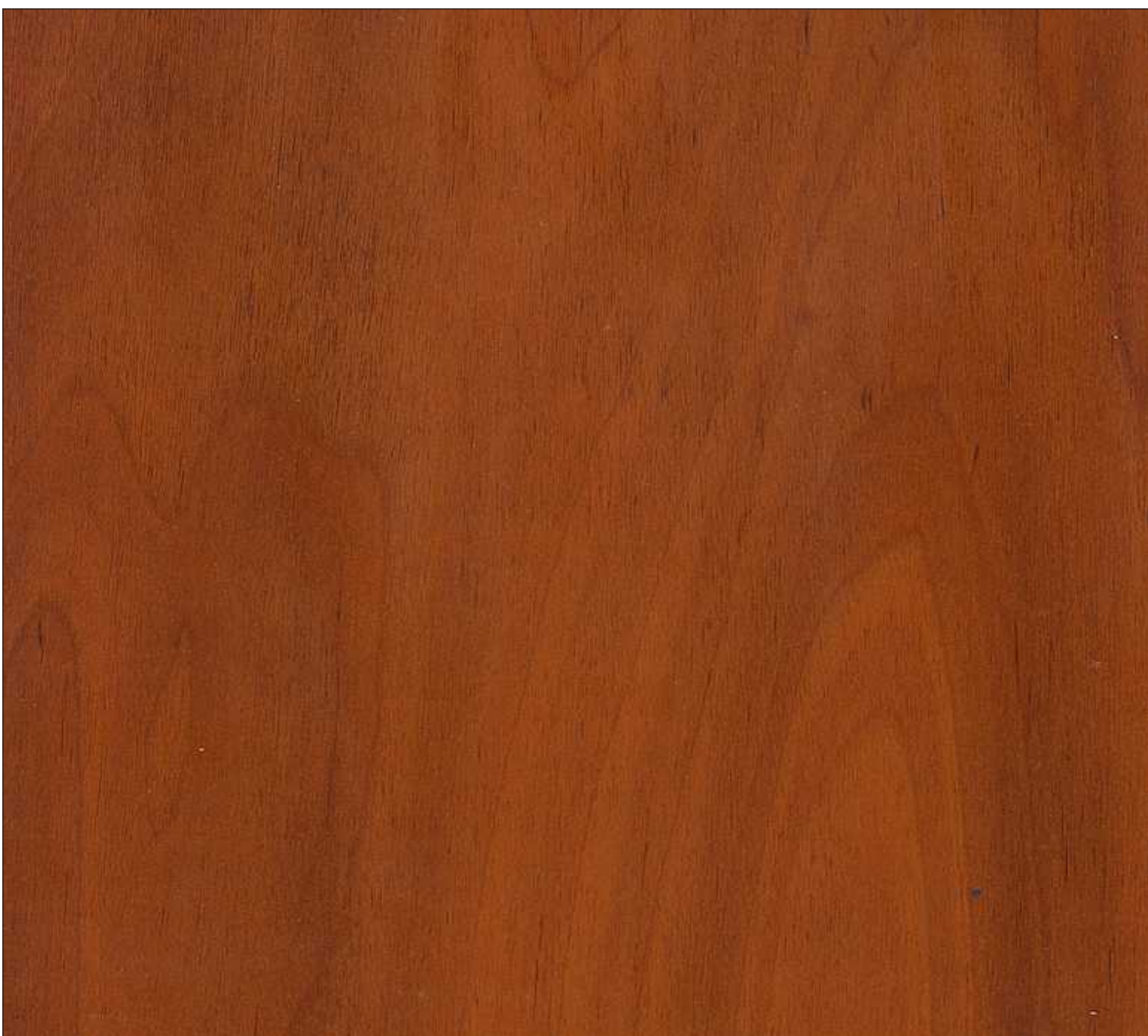
▲ GL 206



▲ GL 815



▲ GL 822



▲ GL 821



▲ GL 811



▲ GL 812



▲ GL 805



▲ GL 806



▲ GL 807



▲ GL 808



▲ GL 813



▲ GL 814



▲ GL 737



▲ GL 736



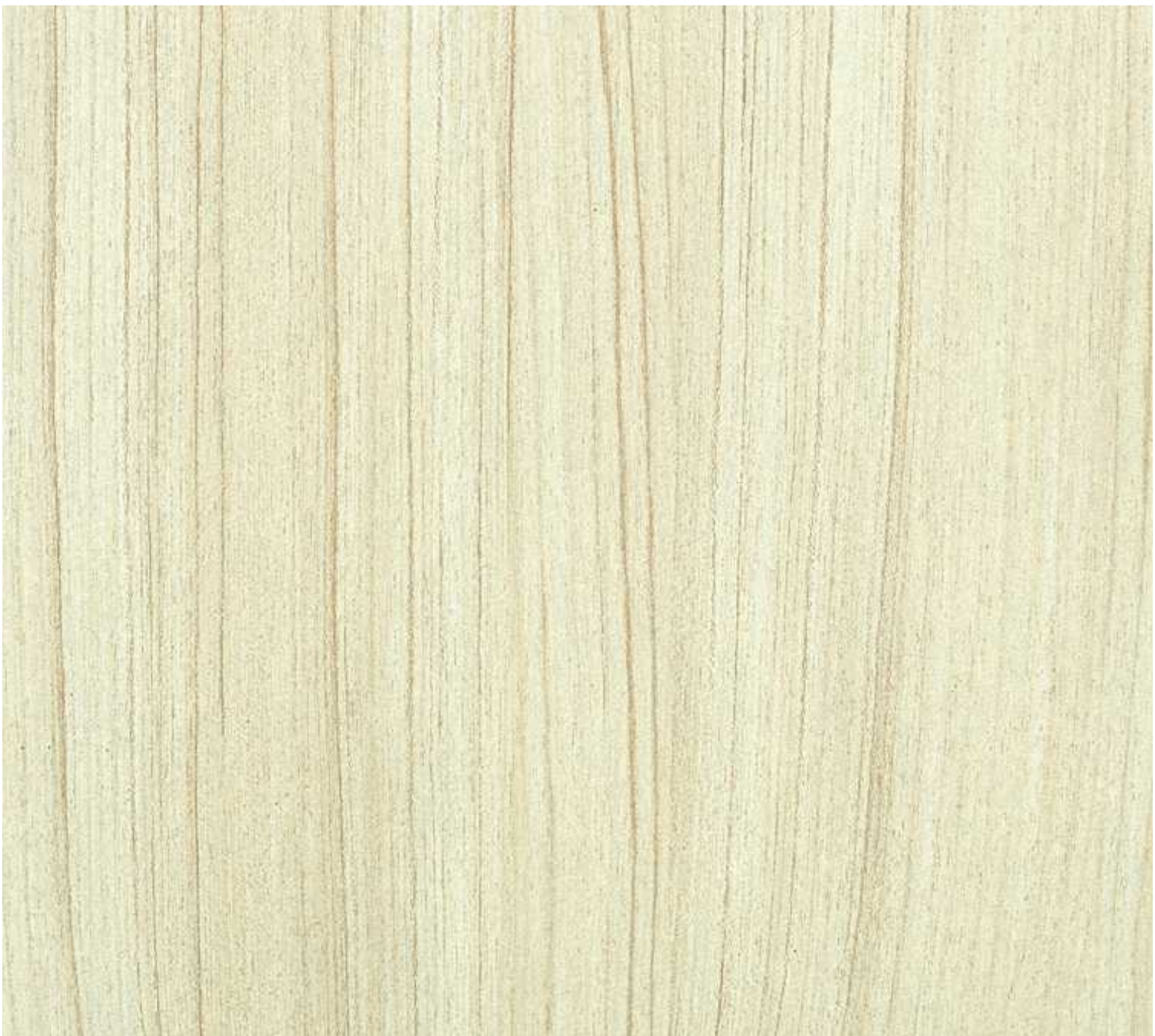
▲ GL 803



▲ GL 804



▲ SF 802



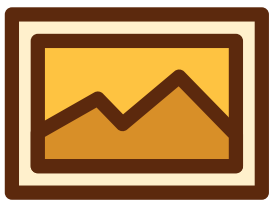
▲ SF 801



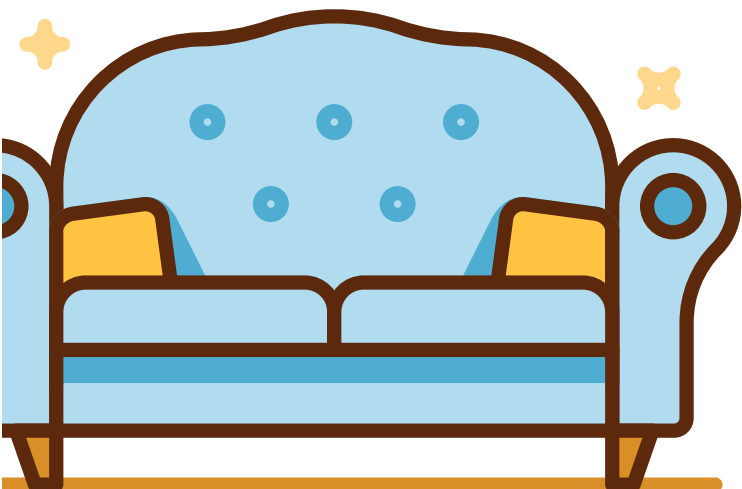
an
de



▲ SF 815



▲ SF 824



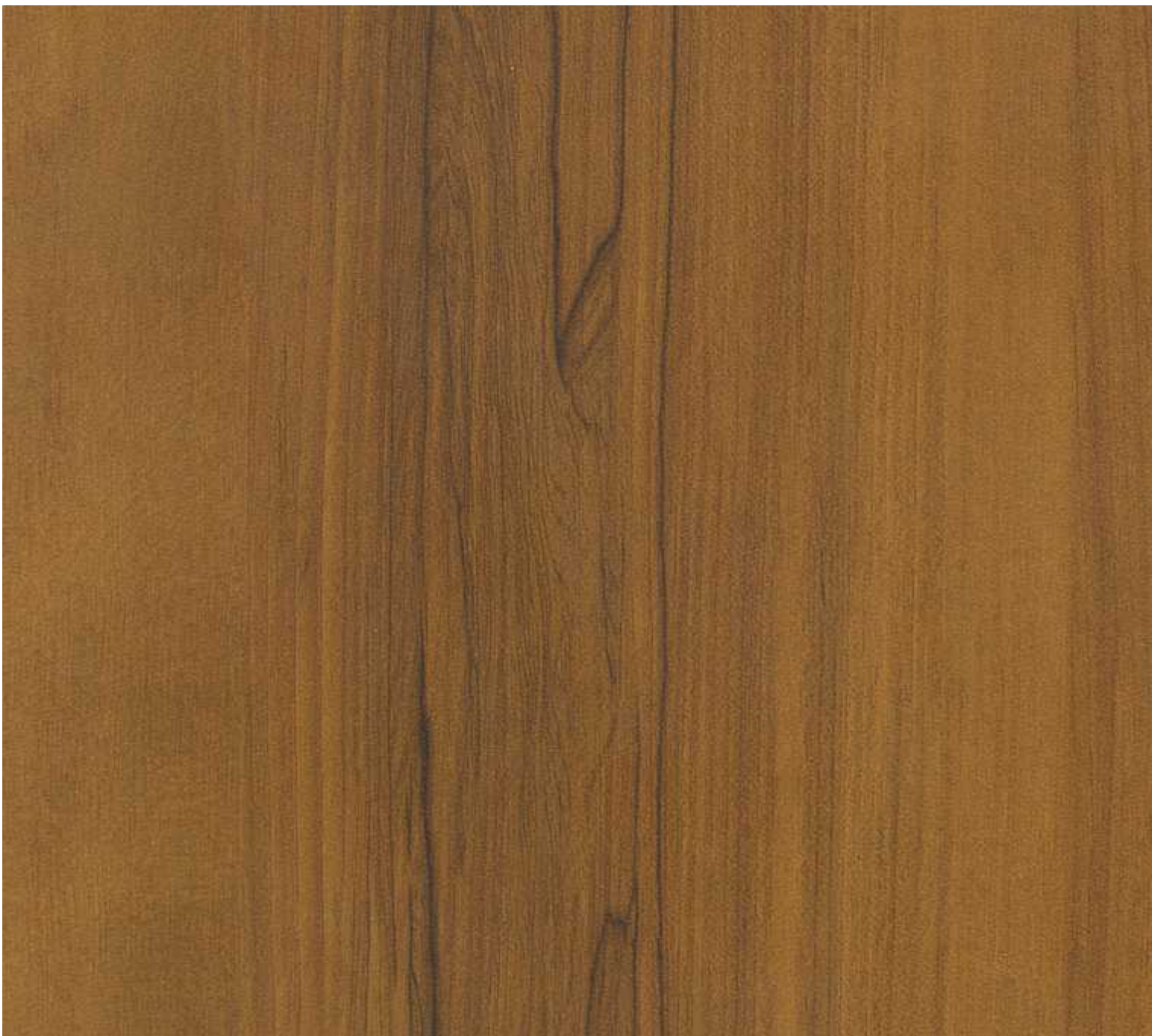
▲ SF 204



▲ SF 816



▲ SF 820



▲ SF 822



▲ SF 823

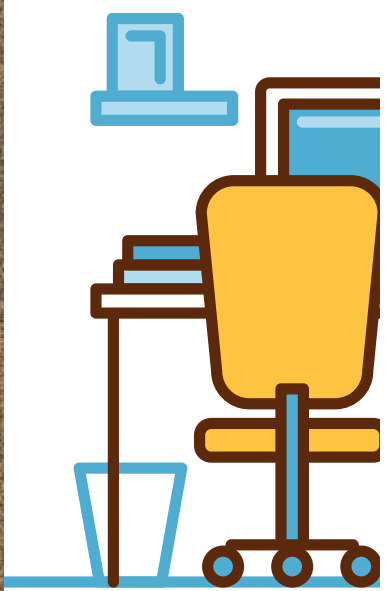


▲ SF 817



▲ SF 818

an
des

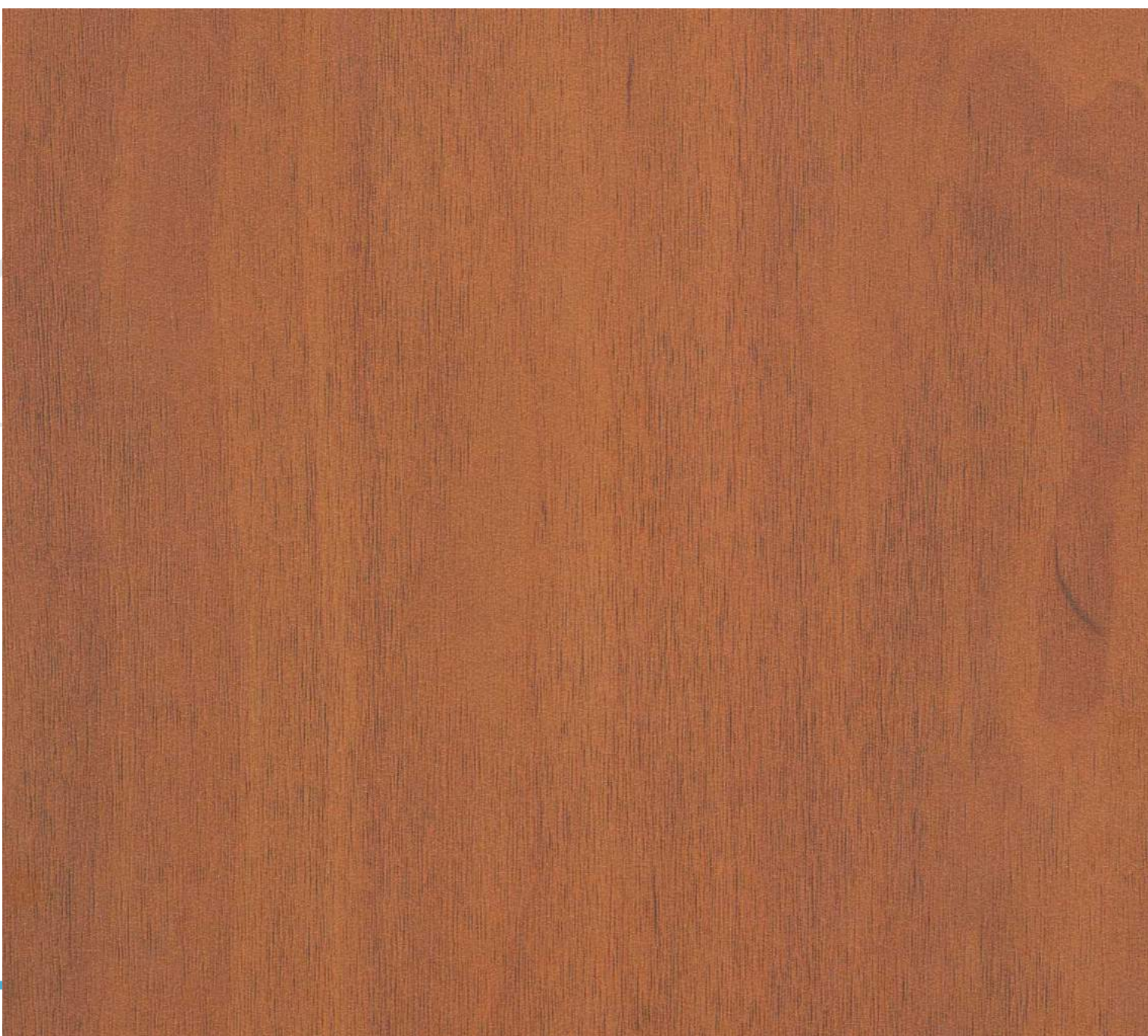




▲ SF 827



▲ SF 826



▲ SF 821

rt
sign





▲ SF 825



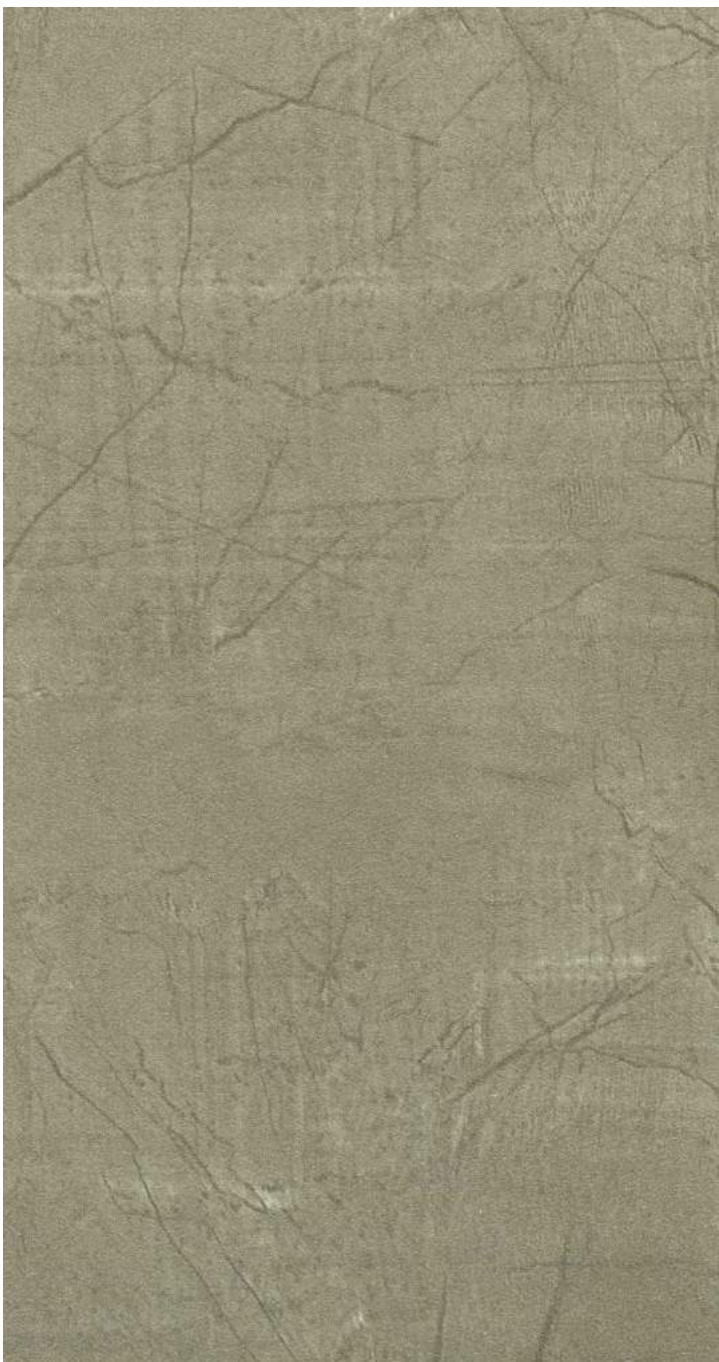
▲ SF 814



▲ SF 813



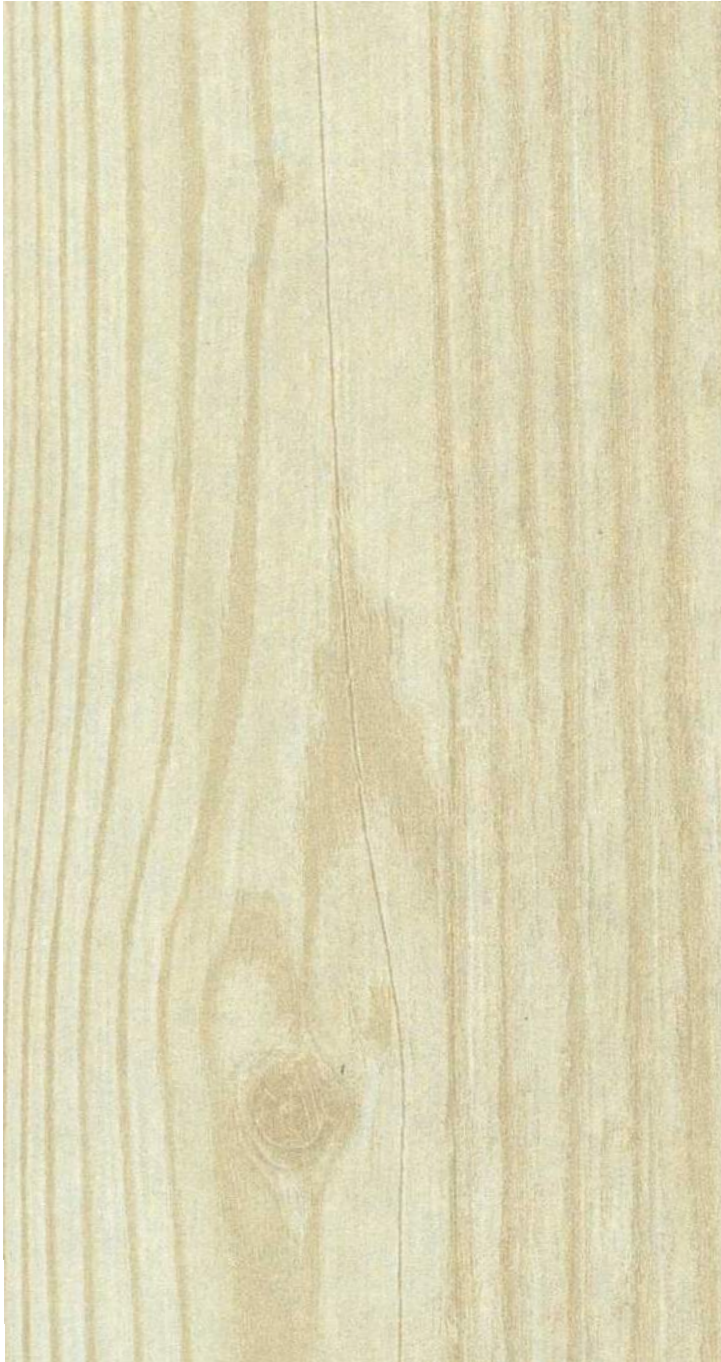
▲ SF 828



▲ SF 805



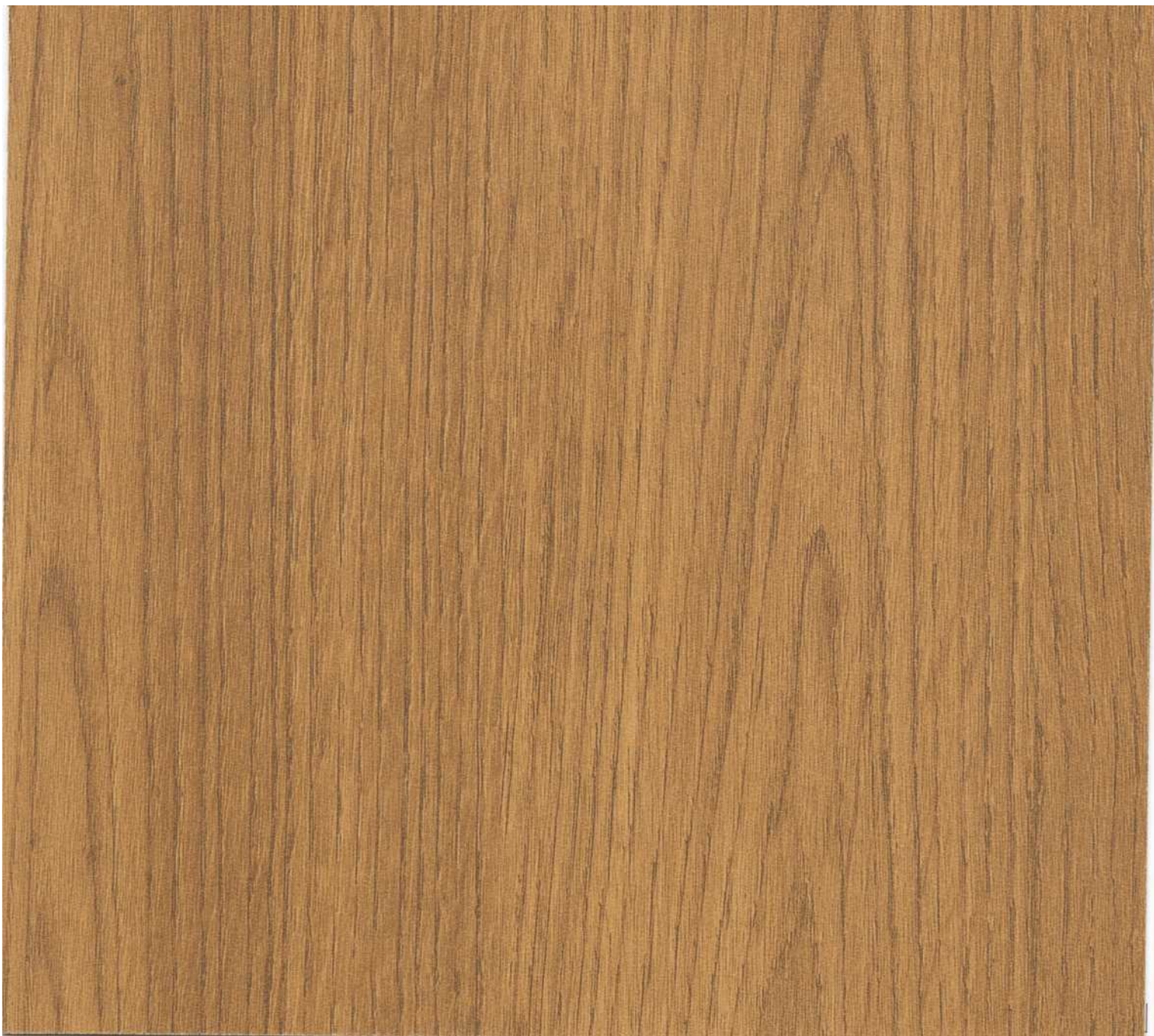
▲ SF 806



▲ SF 803



▲ SF 804



▲ SF 819



▲ SF 915

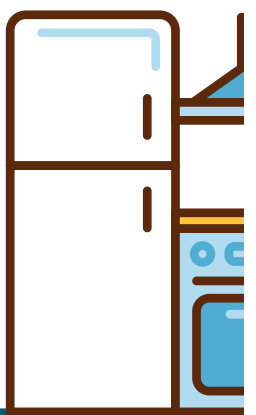


▲ SF 811



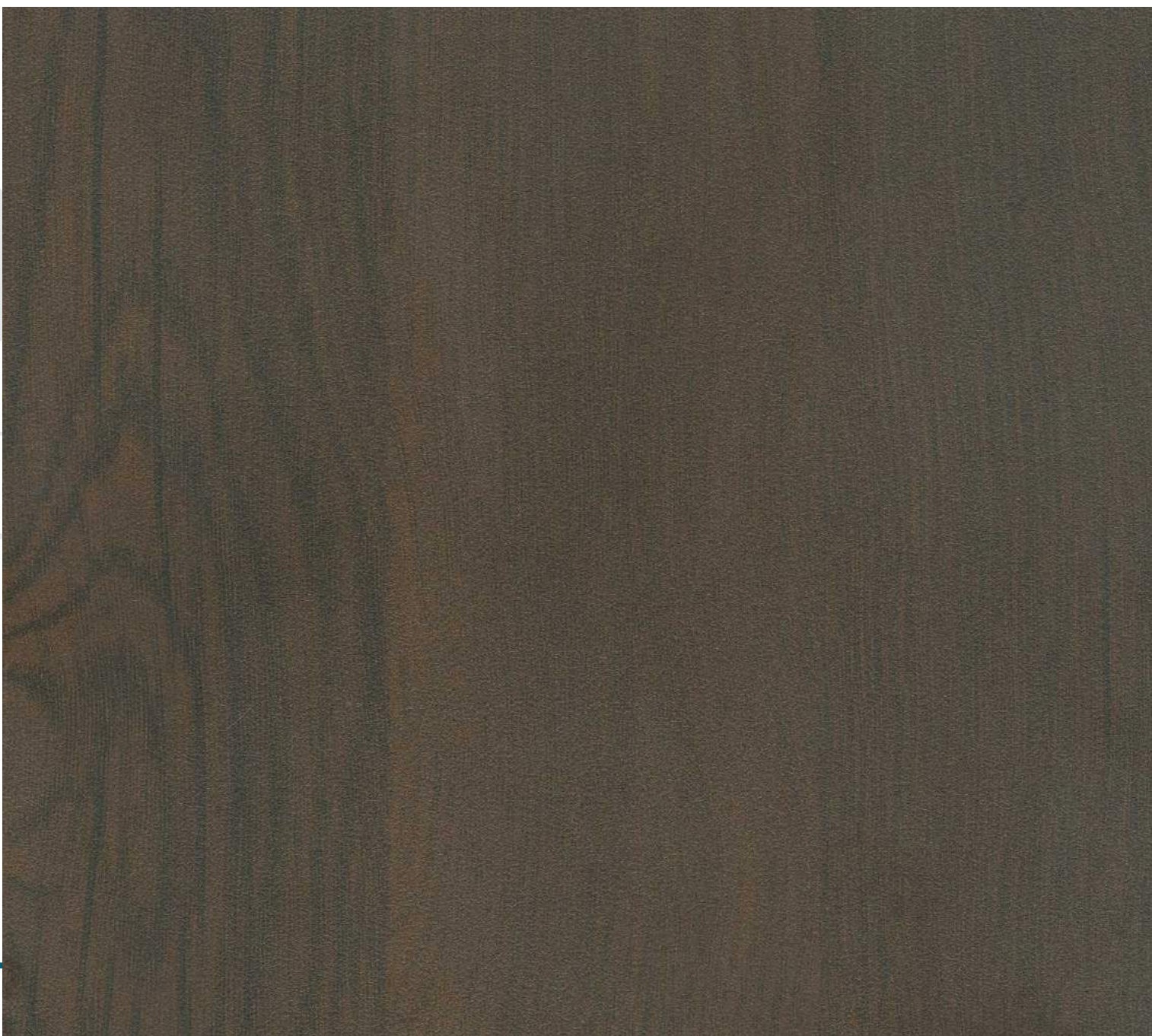
▲ SF 812

ri
lo



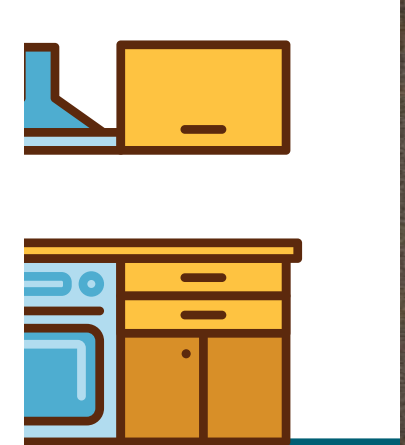


▲ SF 736



▲ SF 737

ch
ook





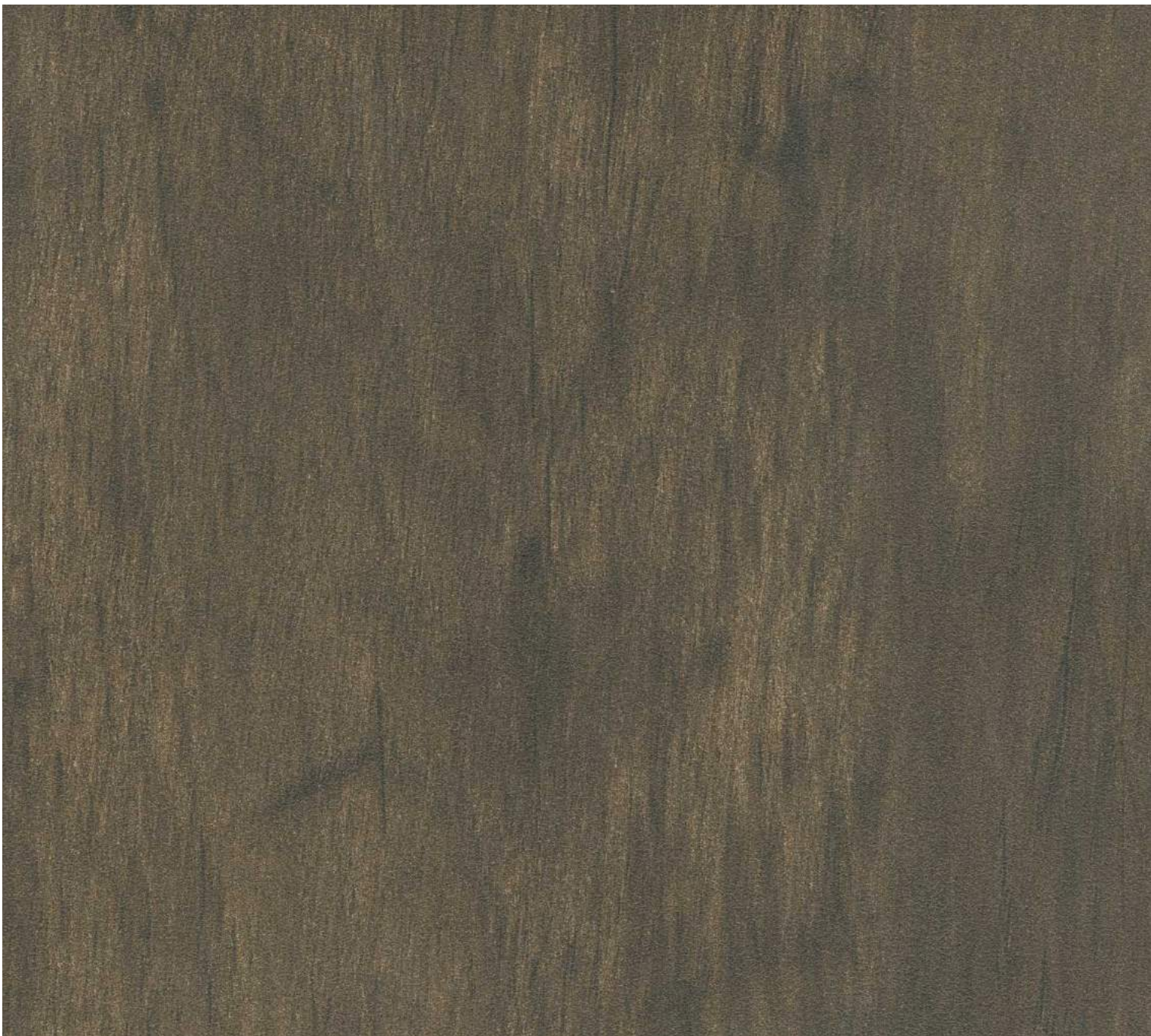
▲ SF 731



▲ SF 730



▲ SF 807



▲ SF 808



▲ SF 531



▲ SF 529



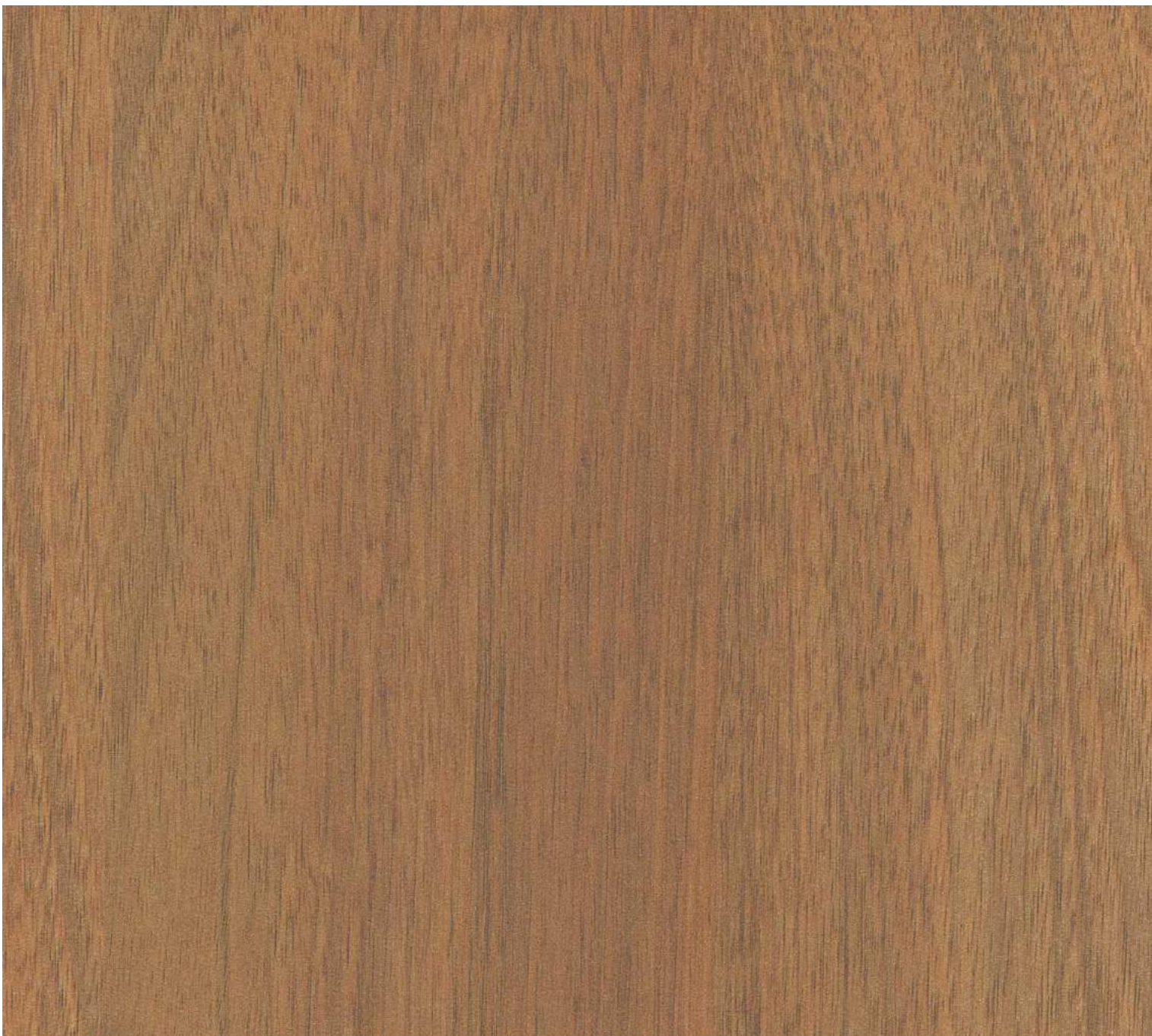
▲ SF 528



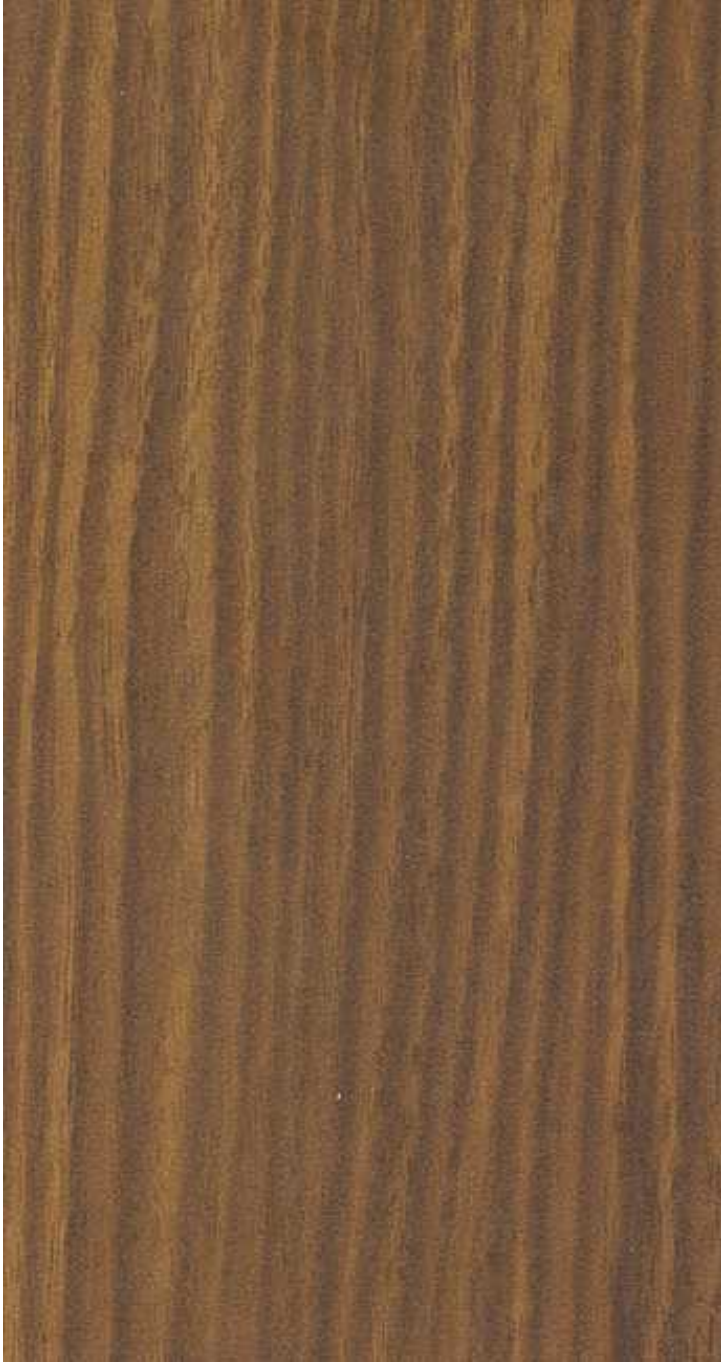
▲ SF 563



▲ SF 526



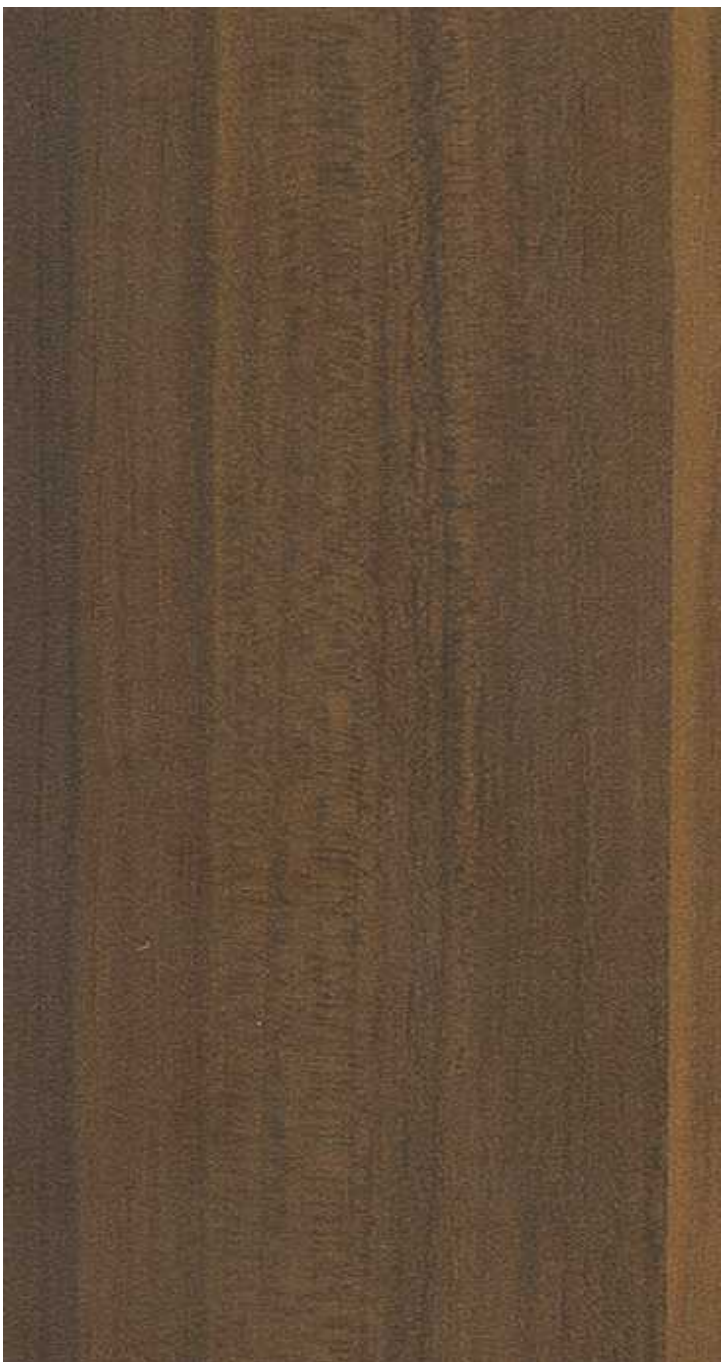
▲ SF 810



▲ SF 564



▲ SF 809



▲ SF 566



▲ SF 705



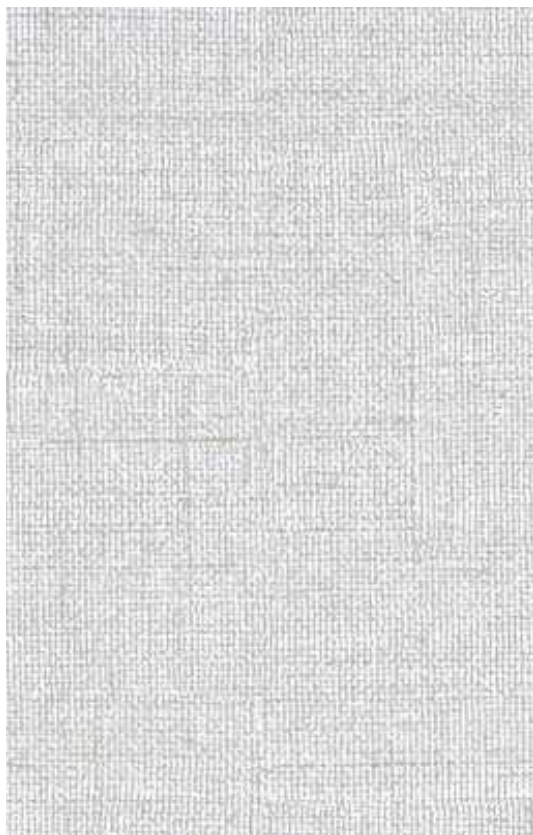
▲ SF 922



▲ SF 506



▲ SF 507



▲ SF 913



▲ SF 921



▲ SF 917



▲ SF 419



▲ SF 416



▲ SF 420



▲ SF 346



▲ GL 399



▲ SF 399



▲ SF 406



▲ SF 401



▲ SF 404



▲ GL 406



▲ GL 401



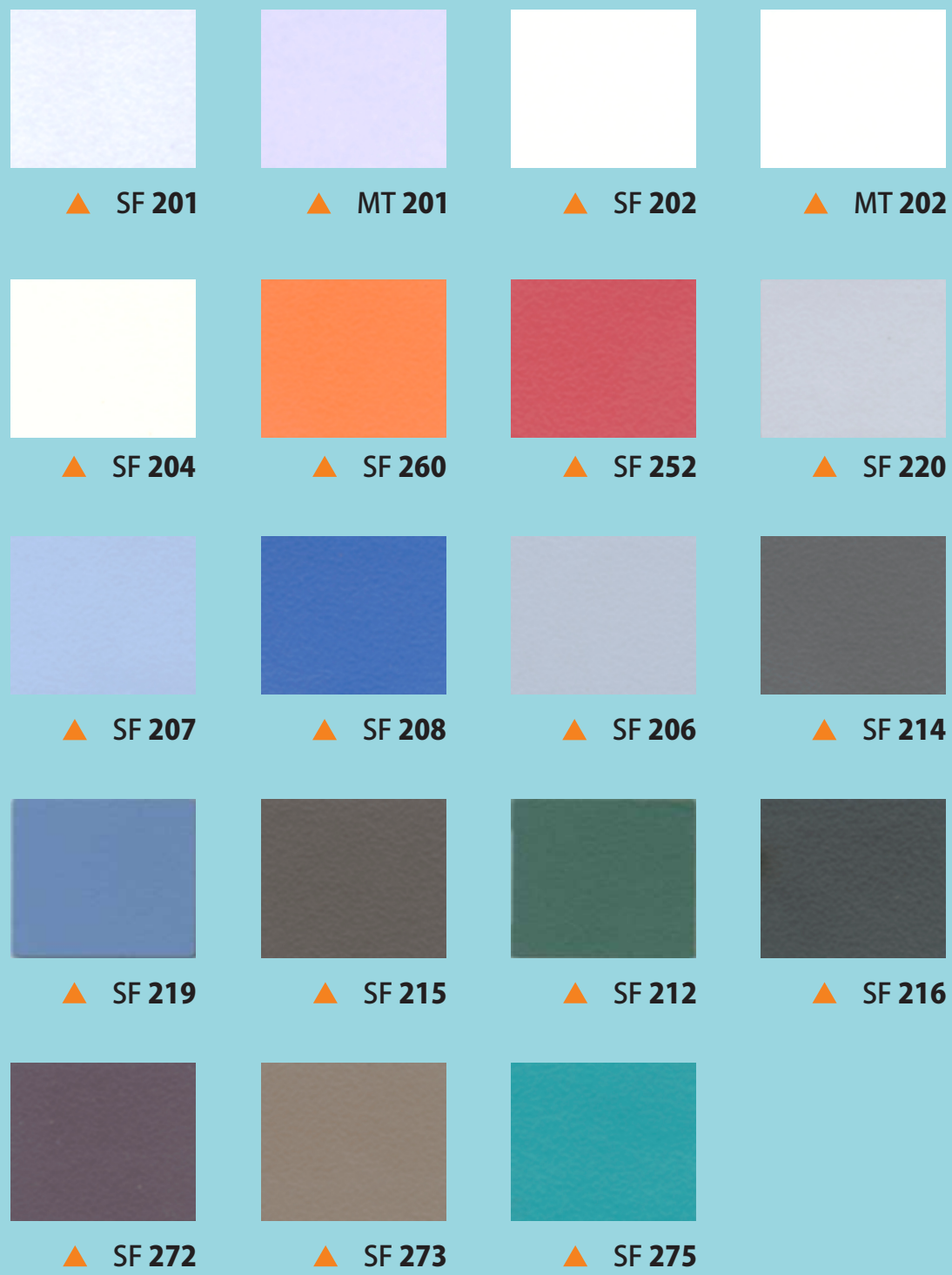
▲ GL 404



▲ SF 366



▲ SF 369



COLOUR